



EVO Manufacturing

EVO-3036 JLU Bomber Rockers with Rockskins



Installation should be performed by a trained professional.

This product requires permanent drilling of holes into the body of the Jeep and installing threaded inserts.

Rivnuts/Nutserts are used in this installation. Installation tool for this is required and not included.

Always wear approved safety equipment while performing the installation.

READ BEFORE INSTALLATION:

1. Safely park vehicle on level ground. Chalk wheels apply parking brake.
2. Remove factory steps/Rubicon Rails on both driver and pass side. There are 6 pinch seam nuts and 3 body bolts on each side.
3. Starting on driver side. Remove the 3 body mount bolts from the underside of the Jeep. Retain the middle and rear bolts.
4. Loosely preassemble inner seam mounts to main bomber rails. The inner seam mounts with the 4-hole pattern will be used at both front and middle locations. The inner seam mount with the 2-hole pattern will be used at the rear locations only. Shim plate should be installed on top side of all inner seam mounts. Using the supplied 3/8" hardware, loosely install all 6 bolts from bottom up at all 3 inner seam mount locations (2 each mount). It is best to tighten these to the point just before getting tight, loose but almost tight. This will save time later during final install while tightening all bolts on the vehicle.

FORWARD AND MIDDLE MOUNTS



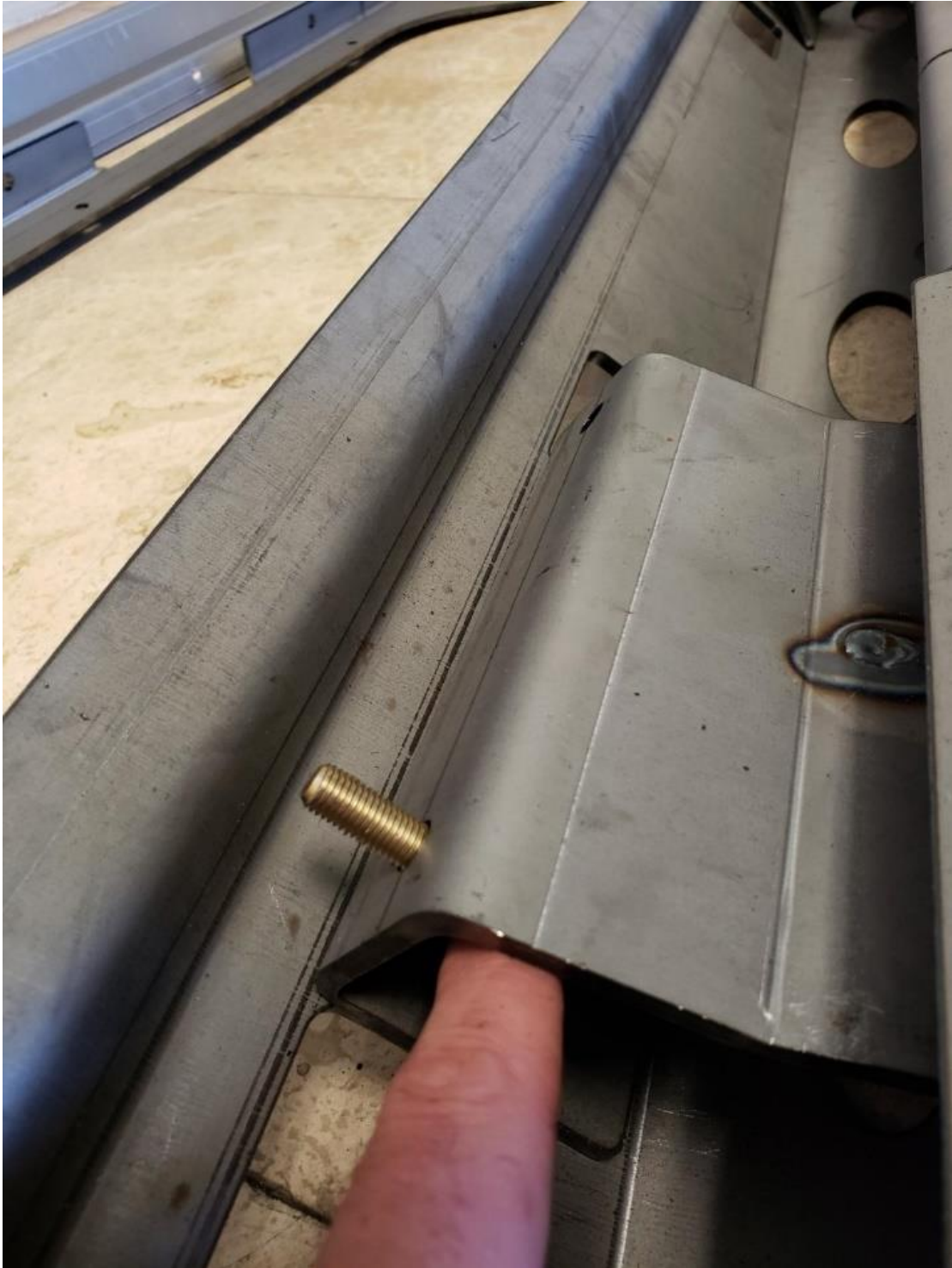
REAR MOUNT



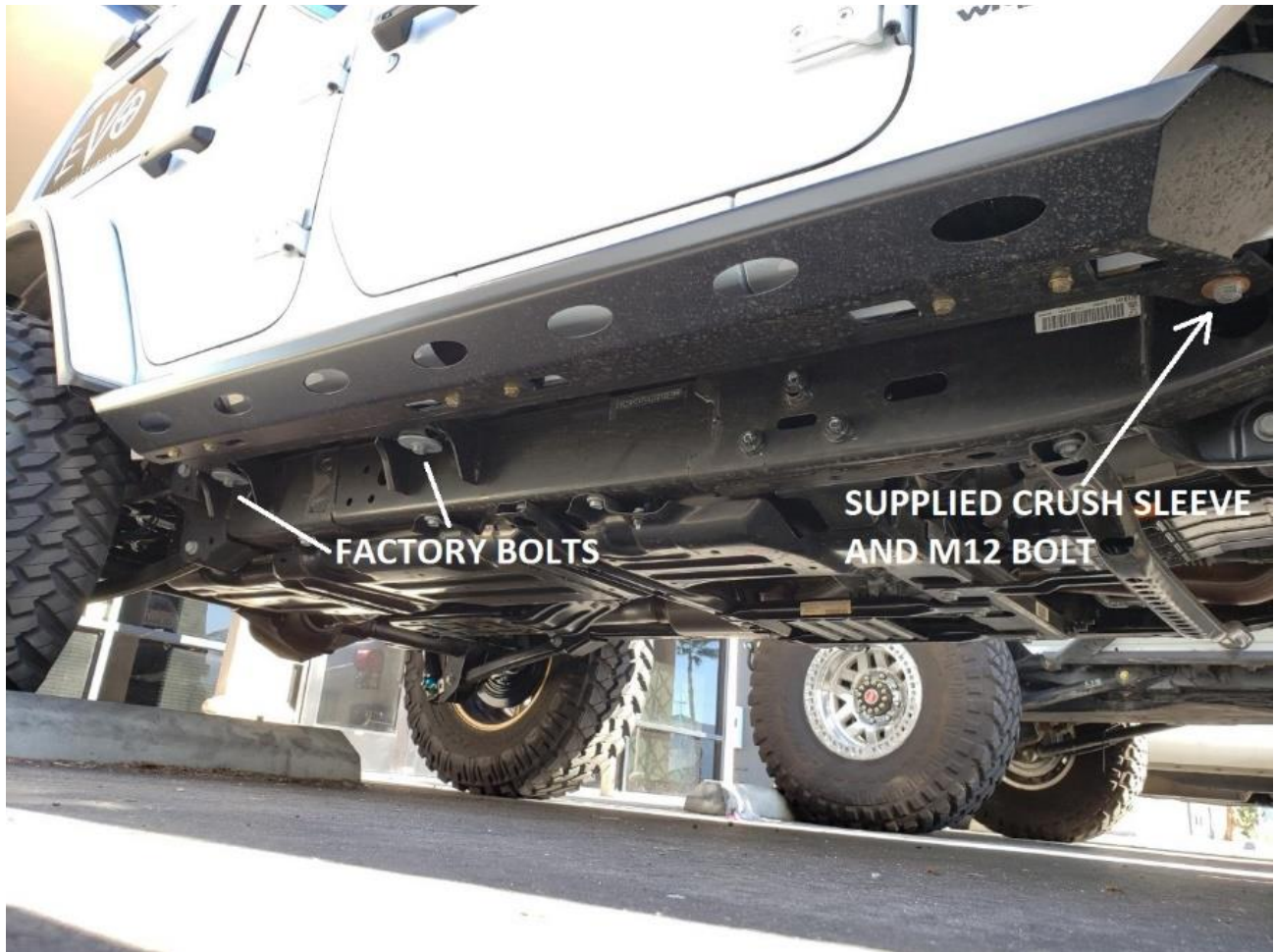
5. Loosely install the EVO MFG Rockskin body plate to main slider part as shown using 7 5/16" button head screws, washers (on bolt head side) and flange nuts.



- Using supplied 5/16" Hex bolts with washers. Install through inner seam mount at most forward and most rearward location. We suggest applying a layer of protective tape on the upper edges of Rockskin panel. With the help of 2 people, lift Bomber into location and insert front and rear bolts into existing pinch seam holes at body. Loosely install washer and nut. This will loosely hold part into place.



7. Insert the supplied crush tube at the front body mount. Between the Bomber Rocker and the body mount. Loosely (just before tightening) install the supplied M12 bolt with washer at this front body mount.
8. Reinstall the middle and rear body mount bolts, just before tight.



9. Using a jack, apply an upward and inward pressure to the bomber rail, lifting it up to an approximate level/as installed location. Lift until the assembly/rockskin match bodyline. Tighten all the 5/16" button head bolts.
10. **With Bomber assembly and Rockskin at an acceptable mounting location to the Jeeps bodylines.** Use a center punch or marker, mark all 11 Rockskin mounting holes onto Jeep body.
11. Verify acceptable fitment, bodylines etc. With mounting holes marked. Uninstall part from Jeep by removing the partially installed pinch seam bolts and body mount bolts.
12. At all marked holes, carefully drill center of mark with 3/8" drill. Only drill through outer portion of sheet metal.
13. Paint all exposed metal at this time.
14. Follow installation instructions provided with the installation tool you are using to install at all 11 nutserts/rivnuts into body at all marked locations.
15. With 2 people, carefully lift bomber rocker assembly back up to its mounting locations.
16. Loosely install the 6 5/16" bolts, washers, nuts at all 6 pinch seam mounts.

17. Loosely install the 2 factory body mount bolts at the middle and rear body mounts.
18. Loosely install crush sleeve and supplied M12 bolt at front body mount.
19. Lift/jack Bomber into final positioning and install all 11 1/4" button head bolts into the installed nutcert/rivnuts through Rockskin panel.
20. Tighten all 3 body mount bolts.
21. Tighten the 6 5/16" bolts at body seam/inner seam mounts.
22. Tighten the 6 lower 3/8" bolts at the pinch seam mounts.
23. Repeat on opposite side.



Size	Recommended Torque											
	Grade 2		Grade 5		Grade 8		18-8 S/S		Bronze		Brass	
	Coarse	Fine	Coarse	Fine	Coarse	Fine	Coarse	Fine	Coarse	Fine	Coarse	Fine
#4*	-	-	-	-	-	-	5.2	-	4.8	-	4.3	-
#6*	-	-	-	-	-	-	9.6	-	8.9	-	7.9	-
#8*	-	-	-	-	-	-	19.8	-	18.4	-	16.2	-
#10*	-	-	-	-	-	-	22.8	31.7	21.2	29.3	18.6	25.9
1/4	4	4.7	6.3	7.3	9	10	6.3	7.8	5.7	7.3	5.1	6.4
5/16	8	9	13	14	18	20	11	11.8	10.3	10.9	8.9	9.7
3/8	15	17	23	26	33	37	20	22	18	20	16	18
7/16	24	27	37	41	52	58	31	33	29	31	26	27
1/2	37	41	57	64	80	90	43	45	40	42	35	37
9/16	53	59	82	91	115	129	57	63	53	58	47	51
5/8	73	83	112	128	159	180	93	104	86	96	76	85
3/4	125	138	200	223	282	315	128	124	104	102	118	115
7/8	129	144	322	355	454	501	194	193	178	178	159	158
1+	188	210	483	541	682	764	287	289	265	240	235	212