

GT
MOMENTUM

advanced FLOW engineering

Cold Air Intake System

Instruction Manual P/N: 50-70100D/50-70100R

Make: TOYOTA
Make: TOYOTA

Model: TUNDRA
Model: SEQUOIA

Year: 2022-2023
Year: 2023

Engine: V6-3.4L(tt)
Engine: V6-3.4L(tt)



- Please read the entire instruction manual before proceeding.
- Ensure all components listed are present.
- If you are missing any of the components, call customer support at 951-493-7185.
- Ensure you have all necessary tools before proceeding.
- Do not attempt to work on your vehicle when the engine is hot.
- Retain factory parts for future use.

Label	Qty.	Description	Part Number
A	2	Air Filter (Pro 5R) For 50-700100R	20-91203R
A	2	Air Filter (Pro DRY S) For 50-70100D	20-91203D
B	1	Tube: Driver Side	05-5070091B1
C	1	Tube: Passenger Side	05-5070091B2
D	1	Housing: Driver Side	05-5070100B3
E	1	Housing: Passenger Side	05-5070100B4
F	2	Coupling, Silicone Elbow Rdr: (3"x2-1/2")IDx 35Deg	05-01421
G	2	Clamp, 044 (2-5/16" - 3-1/4")	03-50019
H	2	Clamp, 048 (2-9/16" - 3-1/2 ")	03-50007
J	2	Plug, Silicone: 2.25" Dia	05-01482
K	1	Gasket, Inlet Passenger Side: 05-5070091B4	05-01714
M	1	Gasket, Inlet Driver Side: 05-5070091B3	05-01713
N	4	Screw, Torx: M4 x 10mm	03-50490
P	2	Alcohol Wipes	05-01716

Installation will require the following tools:

8mm and 10mm Nut Drivers or Ratchet and Sockets, Flat-head and Phillips Screwdrivers, T20 Torx Driver

Warranty Information available at: <https://afepower.com/contact#warranty>

Emissions Disclaimer: This product is not currently CARB exempt and is not available for purchase in California or for use on any vehicle registered with the California Department of Motor Vehicles.

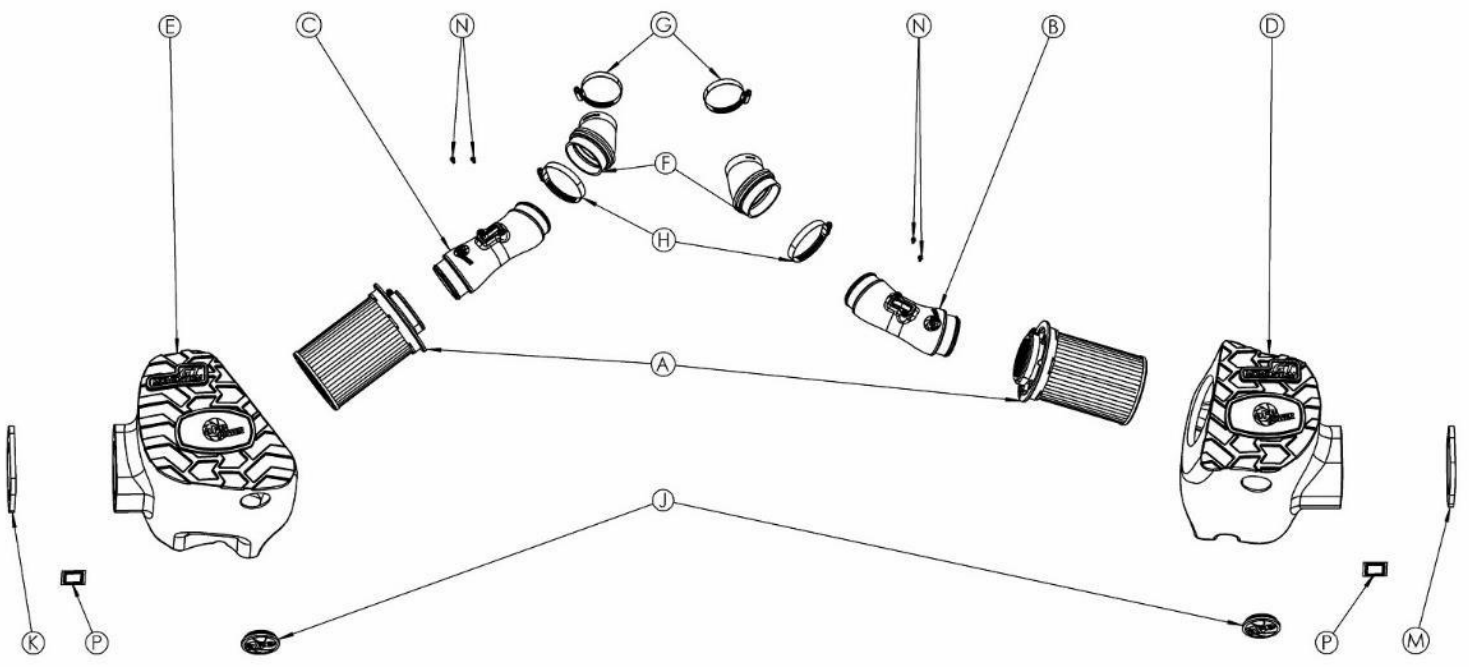




Figure A

Refer to Figure A for Steps 1-3

Step 1: Disconnect the passenger side Mass Air Flow (MAF) sensor and unclip the harness from the airbox.

Step 2: Loosen the clamp securing the intake tube to the turbo inlet, using a 10mm socket or nut driver.

Step 3: Lift the passenger side air intake assembly from the vehicle by firmly pulling the grommets out of the mounts.



Refer to Figure B for Step 4

Step 4: Transfer the three grommets from the passenger side factory air box to the aFe POWER passenger side housing.

**Figure C****Refer to Figure C for Step 5**

Step 5: Wipe the non-textured surface of the air inlet with the provided cleaning wipe to remove any residual mold release. Wait for the alcohol to evaporate, then apply the passenger-side foam gasket on the surface of the air inlet.



Figure D

Refer to Figure D for Steps 6-7

Step 6: : Install the aFe POWER air box into the vehicle. Make sure the housing is seated onto the 3 mounting pegs.

Step 7: Install the air filter into the housing by firmly pushing it into the housing until the filter tabs lock it into place. Install the clamp on the filter, but do not tighten at this time.



Figure E

Refer to Figure E for Step 8

Step 8: Loosely install the clamps onto the aFe POWER coupling, and then install the coupling onto the turbo inlet, as shown. Do not tighten the clamps yet.

**Figure F****Refer to Figure F for Step 9**

Step 9: Transfer the MAF sensor from the passenger side factory intake to the aFe POWER intake tube and secure it using the provided M4 screws.



Figure G

Refer to Figure G for Steps 10-11

Step 10: Install the aFe POWER passenger side intake tube between the coupling and filter. Align the tube and coupling and then tighten all clamps.

Step 11: Connect the MAF sensor harness to the MAF sensor.

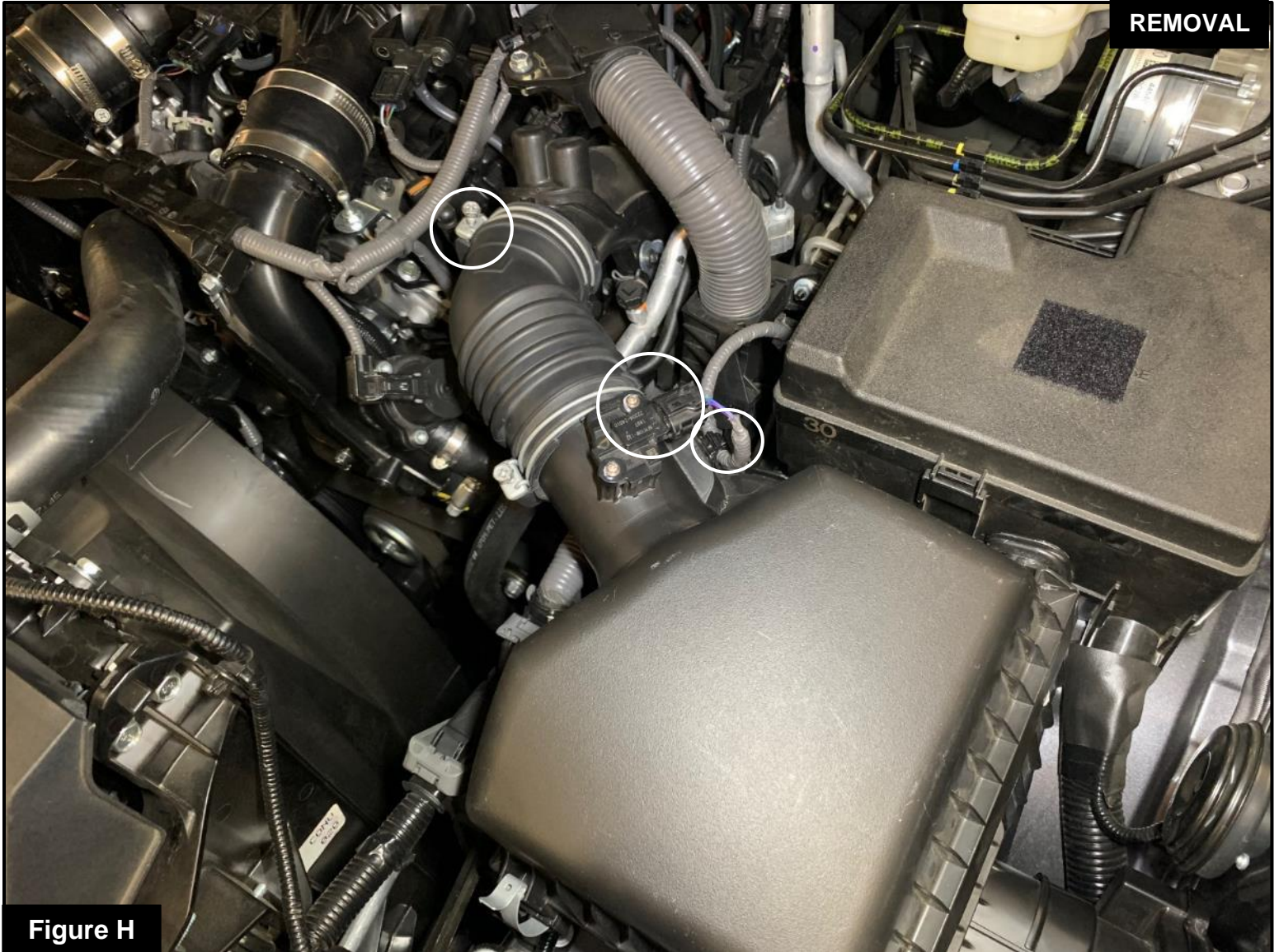


Figure H

Refer to Figure H for Steps 12-14

Step 12: Disconnect the driver side MAF sensor and unclip the harness from the airbox.

Step 13: Loosen the clamp securing the intake tube to the turbo inlet, using a 10mm socket or nut driver.

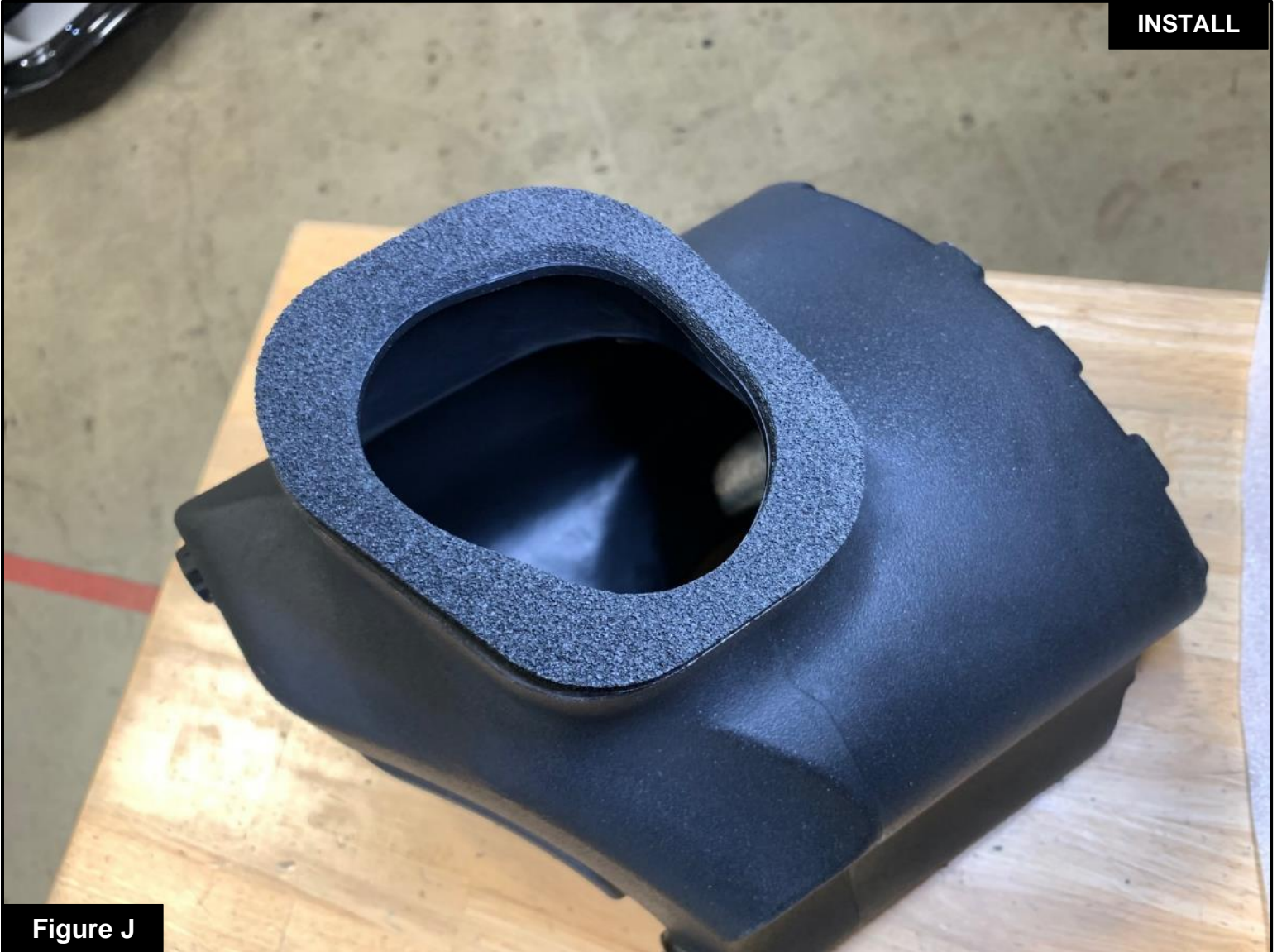
Step 14: Lift the driver side air intake assembly from the vehicle.



Figure I

Refer to Figure I for Step 15

Step 15: Transfer the three grommets from the driver side factory air box to the aFe POWER driver side air box.

**Figure J****Refer to Figure J for Step 16**

Step 16: Wipe the non-textured surface of the aFe POWER air box with the provided cleaning wipe to remove any residual mold release. Wait for the alcohol to evaporate, then apply the driver-side foam gasket on the surface of the air inlet.



Figure K

Refer to Figure K for Steps 17-18

Step 17: Install the aFe POWER air box into the vehicle. Make sure the housing is seated onto the 3 mounting pegs.

Step 18: Install the air filter into the housing by firmly pushing it into the housing until the filter tabs lock it into place. Install the clamp on the filter, but do not tighten at this time.



Figure L

Refer to Figure L for Step 19

Step 19: Loosely install the clamps onto the aFe POWER coupling, and then install the coupling onto the turbo inlet, as shown. Do not tighten the clamps yet.

**Figure M****Refer to Figure M for Step 20**

Step 20: Transfer the MAF sensor from the driver side factory intake to the aFe POWER intake tube and secure it using the provided M4 screws.



Figure N

Refer to Figure N for Steps 21-22

Step 21: Install the aFe POWER driver side intake tube between the coupling and filter. Align the tube and coupling and then tighten all clamps.

Step 22: Reconnect the MAF sensor harness to the MAF sensor.

**Figure O**

Refer to Figure O for Step 23

Step 23: The kit includes optional plugs to close off the auxiliary air inlets. Install the plugs if you wish to close off the auxiliary air inlets and only capture cold air from the fenders.

- Without the plug installed, the aFe POWER intakes will capture the maximum air available. More airflow offers more power. Yet some of this air is picked up from inside the engine compartment could be warmer air. Warmer air will affect the performance of the vehicle.
- The plugs installed on the housings will block off any hot engine air entering the housing to make sure that only the coolest air available is directed into the engine. It will also reduce the noise of the intakes.

**Figure P****Refer to Figure P for Step 24**

Step 24: Make sure all clamps and connections are secured. Your installation is now complete. Thank you for choosing aFe POWER!



advanced FLOW engineering, Inc.

252 Granite Street Corona, CA 92879

<https://afepower.com/contact>