

**GT**  
**MOMENTUM**

**advanced FLOW engineering**

**Cold Air Intake System**

**Instruction Manual P/N: 50-70074R/ 50-70074D**

Make: FORD

Model: F-150

Year: 2021-2022

Engine: V8-5.0L



- Please read the entire instruction manual before proceeding.
- Ensure all components listed are present.
- If you are missing any of the components, call customer support at 951-493-7185.
- Ensure you have all necessary tools before proceeding.
- Do not attempt to work on your vehicle when the engine is hot.
- Retain factory parts for future use.

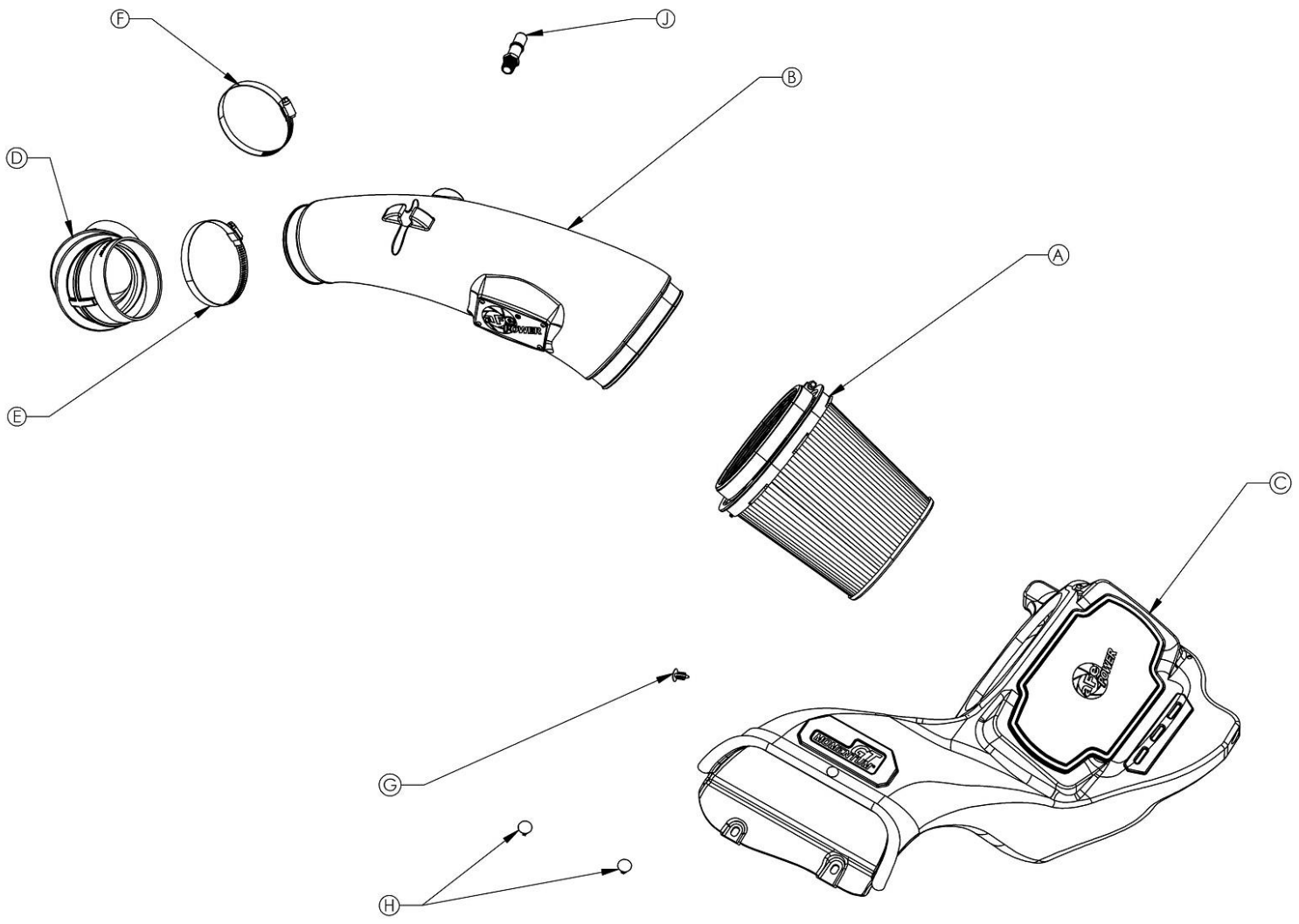
Label	Qty.	Description	Part Number
A	1	Air Filter (Pro 5R) For 50-70074R	24-91092
A	1	Air Filter (Pro DRY S) For 50-70074D	21-91092
B	1	Tube, Plastic	05-5070074B1
C	1	Housing, Plastic	05-5070072B2
D	1	Coupling, Elbow Reducer	05-01587
E	1	Clamp, 072 (3" – 5")	03-50010
F	1	Clamp, 060 (3-5/16" – 4-1/4")	05-50002
G	1	Retainer clip, Christmas Tree: 0.25" Hole	05-01350
H	2	Retainer clip, Push-In style: 6.5mm Hole	03-50773
J	1	Fitting, SAE 15.82 (5/8") to 3/8" NPT	05-01339

**Installation will require the following tools:**

7mm, 8mm, 11mm and 13mm Nut Drivers or Ratchet and Sockets, Flat Head Screwdriver, 20mm wrench or adjustable wrench

Warranty Information available at: <https://afepower.com/contact#warranty>

**Emissions Disclaimer:** This product is not currently CARB exempt and is not available for purchase in California or for use on any vehicle registered with the California Department of Motor Vehicles.





**Refer to Figure A for Steps 1-3**

Step 1: Loosen the clamp securing the intake tube to the throttle body.

Step 2: Detach the coolant hose from the intake tube.

Step 3: Disconnect the vent hose connected to the intake tube.



**Figure B**

**Refer to Figure B for Steps 4-6**

Step 4: Unlatch the two clips securing the air box lid.

Step 5: Remove the air box lid and intake tube from the vehicle.

Step 6: Remove the factory air filter from the air box.



**Figure C**

**Refer to Figure C for Steps 7-8**

Step 7: Remove the two plastic rivets securing the front scoop of the housing.

Step 8: Remove the screw securing the air box to the fender, then pull the factory air box out of the truck.

The screw will be reused to secure the aFe POWER housing.



Figure D

**Refer to Figure D for Steps 9-11**

Step 9: Install the christmas tree clips into the hole below the filter opening.

Step 10: Transfer the grommet and metal sleeve from the factory air box to the aFe POWER housing.



**Figure E**

**Refer to Figure E for Steps 11-13**

- Step 11: Install the aFe POWER housing into the truck by pushing it into the factory mounting grommets.
- Step 12: Secure it using the factory screw removed at step 8. The screw is installed from the inside of the housing.
- Step 13: Secure the front of the housing with the two provided plastic retainer clips.



**Figure F****Refer to Figure F for Steps 14-15**

Step 14: Install the aFe POWER air filter into the aFe POWER housing.

Step 15: Install the coupling and the clamps onto the throttle body, do not tighten any clamps yet.

**Figure G****Refer to Figure G for Step 16**

Step 16: Install the NPT fitting onto the aFe POWER tube. This is a NPT connection, do not overtighten it.

The small space between the hex part and the tube is normal.

**Figure H****Refer to Figure H for Step 17**

Step 17: Install the aFe POWER tube into the coupling then into the filter. Align the coupling, tube and filter then tighten all clamps.



**Refer to Figure I for Steps 18-19**

Step 18: Connect the vent hose to the aFe POWER tube. You will hear the quick disconnect fitting snap into place when fully engaged.

Step 19: Reattach the coolant hose to intake tube.



**Figure J**

**Refer to Figure J for Step 20**

Step 20: Verify all clamps and connections are secured. Your installation is now complete. Thank you for choosing aFe POWER.



Page left blank intentionally



Page left blank intentionally



***advanced FLOW engineering, Inc.***

252 Granite Street Corona, CA 92879

<https://afepower.com/contact>