

# *aFe Control Rear Tow Hook Set Toyota A90 Supra*

**Product Number:** 450-721002-B/G/L/R

**Install Time:** 10 Min. (Rear Tow Hook)



**Recommended Tools:**

Sockets: 15mm, 7/8

Socket Wrench

Small Extension

## Removal of Cap:

1. Push on arrow to pop cap out.



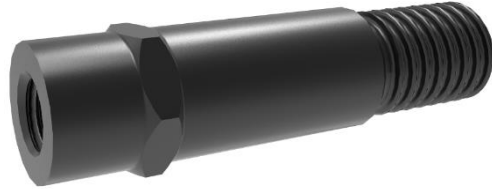
2. Remove cap once popped out.  
*(Note: gently pull on hanger to fully remove cap)*





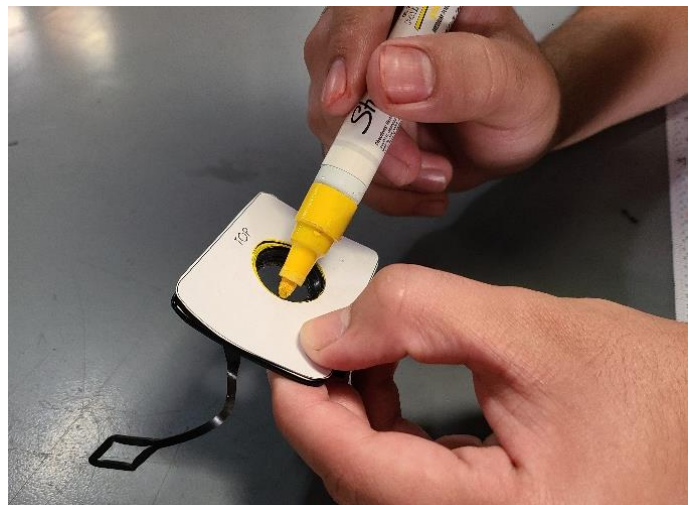
## Installation of Tow Hook:

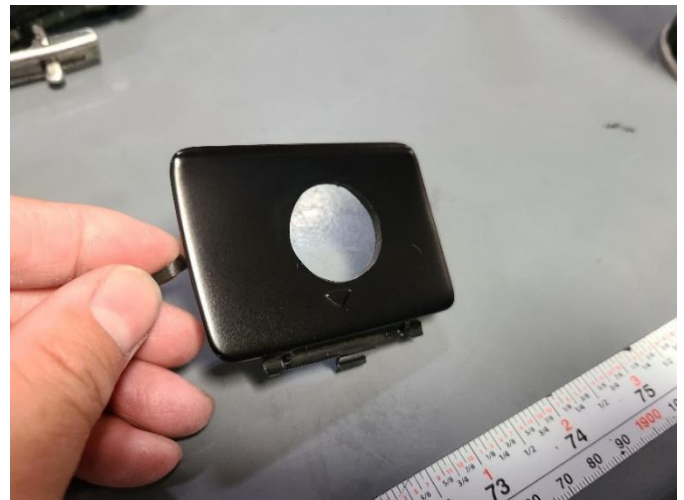
1. Thread in stem with 7/8 socket and fully tighten. *(note: Bolts are pre-coated with Vibratite Thread Locker)*



## Optional Modification:

- a) Place rear cap template over your tow hook cap. Outline the circle with a marker onto the cap. After outline is drawn you should be ready to cut it out with a Dremel.





2. Test fit cap. Trim as needed until stem clears cap easily.





3. Thread in hook to the stem with the supplied bolt using a 15mm socket and firmly tighten it. You are now finished with the rear tow hook installation.



Page Left Intentionally Blank

Page Left Intentionally Blank



*232 Granite St.  
Corona, CA 92879  
aFepower.com*