



advanced FLOW engineering

Instruction Manual P/N: 46-20141

BladeRunner - GT Series Intercooler

Make: Ford Model: F-250/350 Year: 11-16 Engine: V8 – 6.7L (td)



- Please read the entire instruction manual before proceeding.
- Ensure all components listed are present.
- If you are missing any of the components, call customer support at 951-493-7100.
- Ensure you have all necessary tools before proceeding.
- Do not attempt to work on your vehicle when the engine is hot.
- Disconnect the negative battery terminal before proceeding.
- Retain factory parts for future use.

Label	Qty.	Description	Part Number
A	1	Intercooler	05-60892
B	1	Coolant Hose, Upper	05-61029
C	2	Clamp, No. 012 (11/16" - 1-1/4")	03-50632
D	2	Plug, Hex Hd Socket: 1/8" NPT	03-50029
E	1	Nut, Clip: M8 x 1.25	05-60104

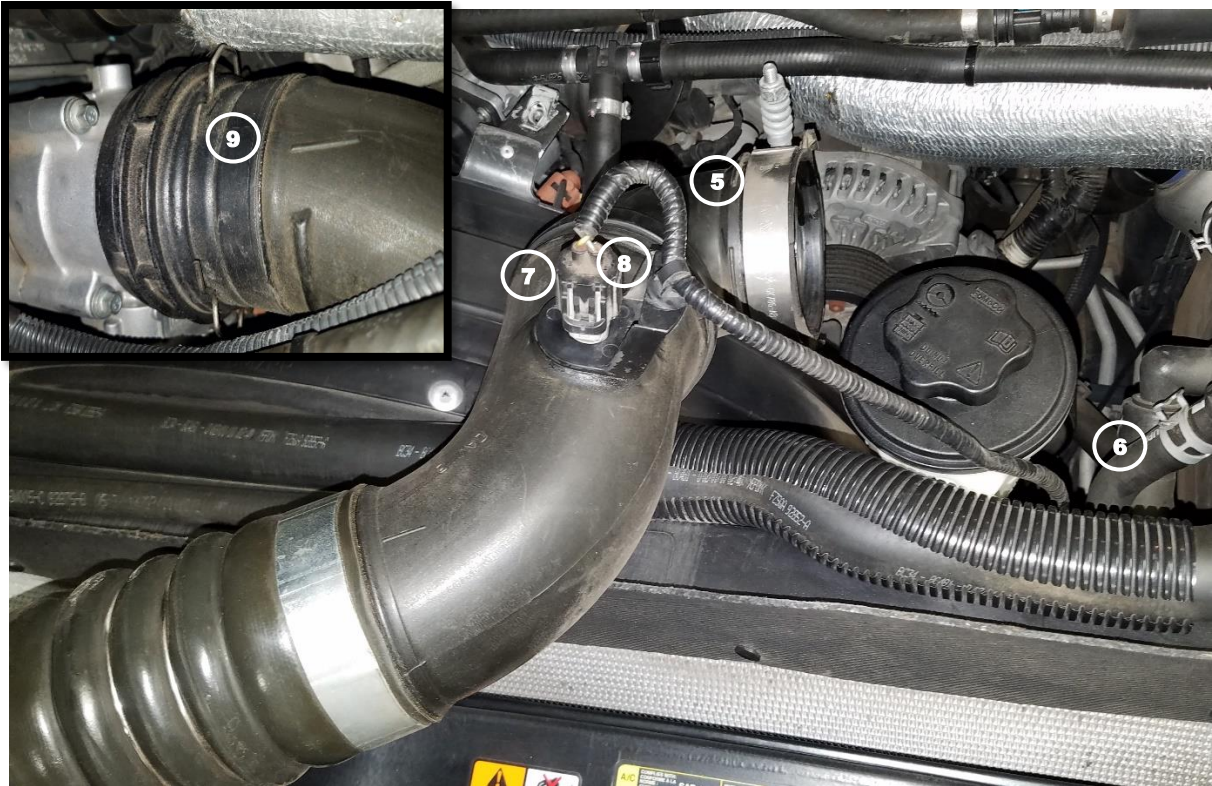
Tools Needed: 7mm, 8mm, 10mm, 13mm, 7/16" sockets, 3/16" allen wrench, 4mm Allen wrench, 3/8" drive ratchet, 6" extension, pick, flat blade screwdriver, thread sealant, grease, 5 gallon drain pan.

Note: Legal in California for use on race vehicles only. The use of this device on vehicles used on public streets or highways is strictly prohibited in California and others states that have adopted California emission regulations





1. Park vehicle on level ground and engage the parking brake.
2. Let vehicle cool down for at least 3 hours.
3. Disconnect both negative battery cables.
4. Remove the cap from the primary coolant tank ①
5. Drain the coolant from the primary cooling system into a large drain pan. The petcock is located on the driver side right behind the front bumper, on the outside of the frame rail ②
6. Remove the cap from the secondary coolant tank ③
7. Drain the coolant from the secondary cooling system into a large drain pan. The petcock is located on the passenger side right behind the front bumper, on the outside of the frame rail ④



8. Loosen the clamp securing the cold side intercooler tube coupling to the plastic adapter connected to the engine ⑤
9. Loosen the clamp securing the cold side intercooler tube to the intercooler ⑥
10. Disconnect the cold side intercooler tube from the intercooler.
11. Disconnect the electrical connection ⑦ from the temperature sensor on the cold side intercooler tube.
12. Disconnect the wire harness ⑧ from the intercooler tube then remove the cold side intercooler tube from the vehicle.
13. Remove retaining clip from the plastic adapter then remove the plastic adapter from the engine inlet ⑨



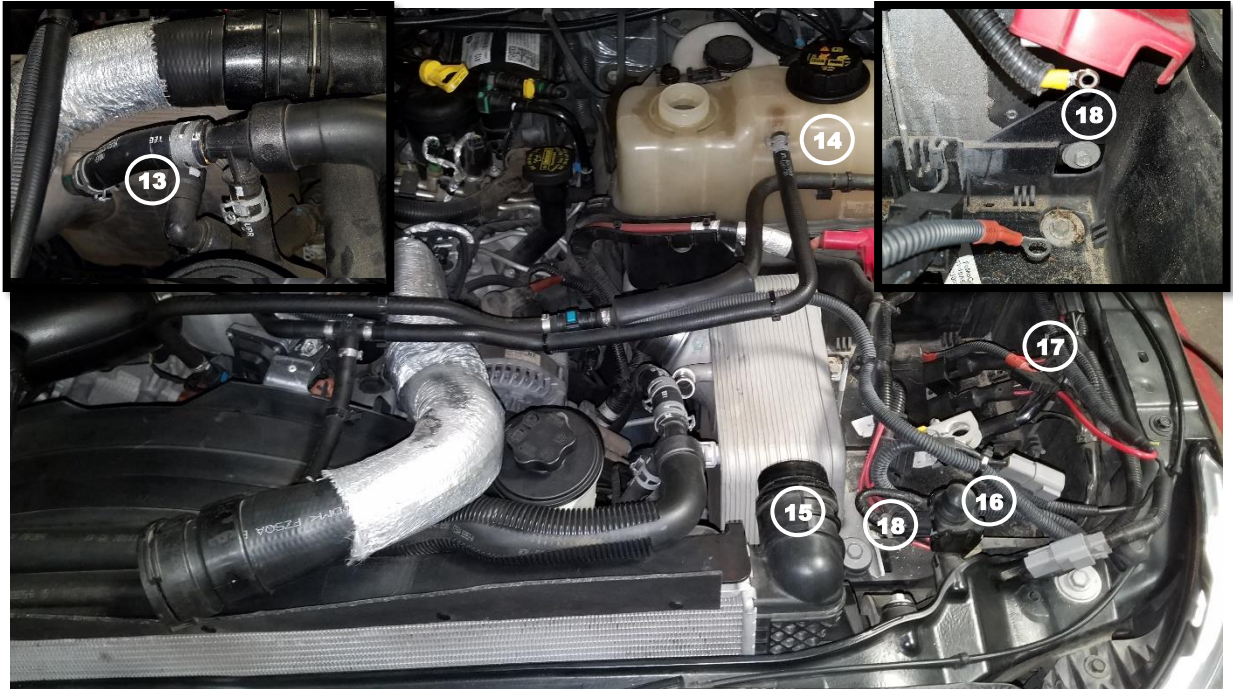
14. Loosen the clamp securing the hot side intercooler tube coupling to the intercooler (10)

Note: It may be necessary to use a pick to break the connection between the intercooler tube coupling and the intercooler inlet in order to slide the coupling off

15. Disconnect the hot side intercooler tube coupling from the intercooler.

16. Lift both sides of the retaining clip that secures the intercooler tube to the turbo using two flat head screwdrivers and disconnect it from the turbo (11)

17. Remove the hot side intercooler tube from the vehicle.



18. Disconnect the two (2) coolant lines for the intercooler from the vehicle (13)

19. Disconnect the coolant overflow hose from the coolant tank (14)

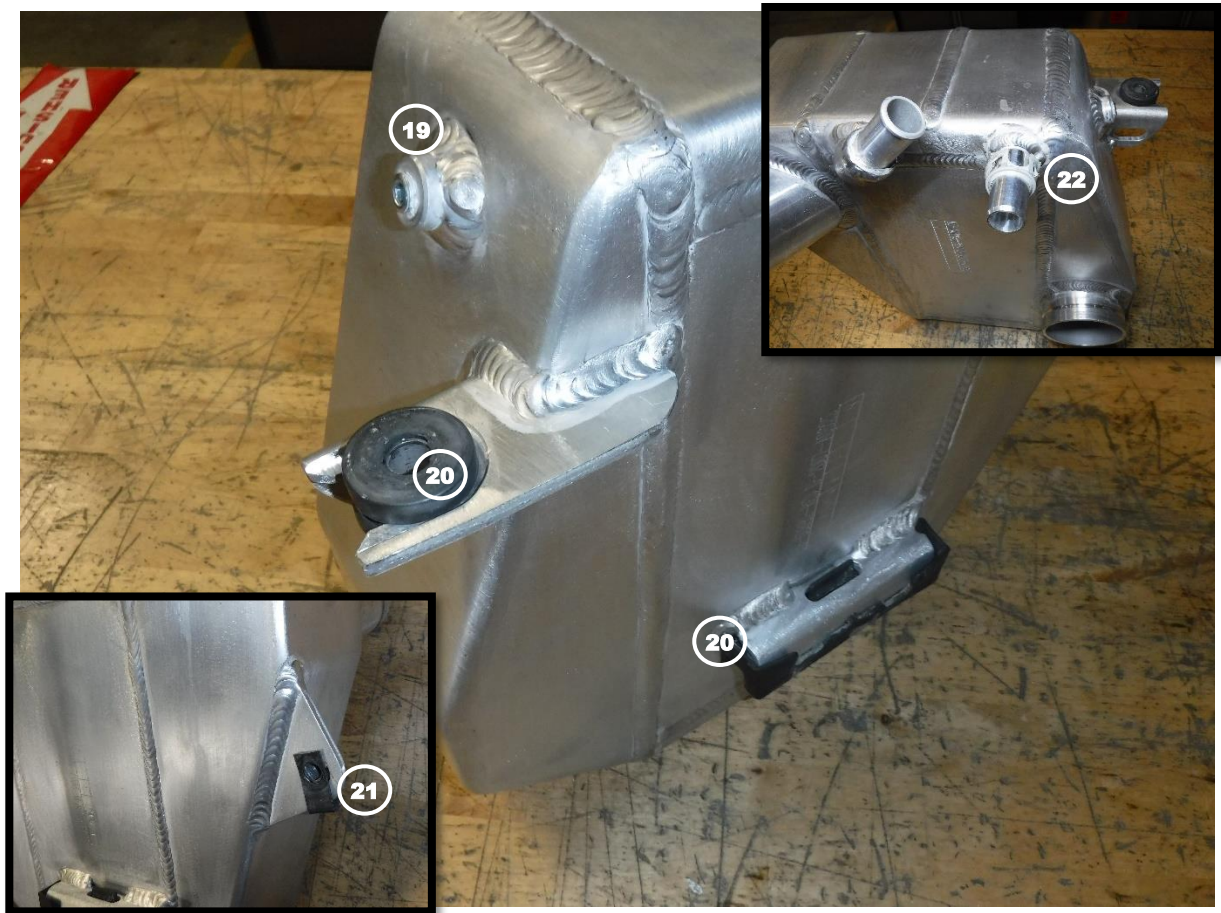
20. Disconnect the upper radiator hose from the radiator (15) by removing the retaining clip and pulling the hose connection apart.

21. Disconnect the hood switch connection and remove the switch from the vehicle (16)

22. Remove the driver side battery from the vehicle (17)

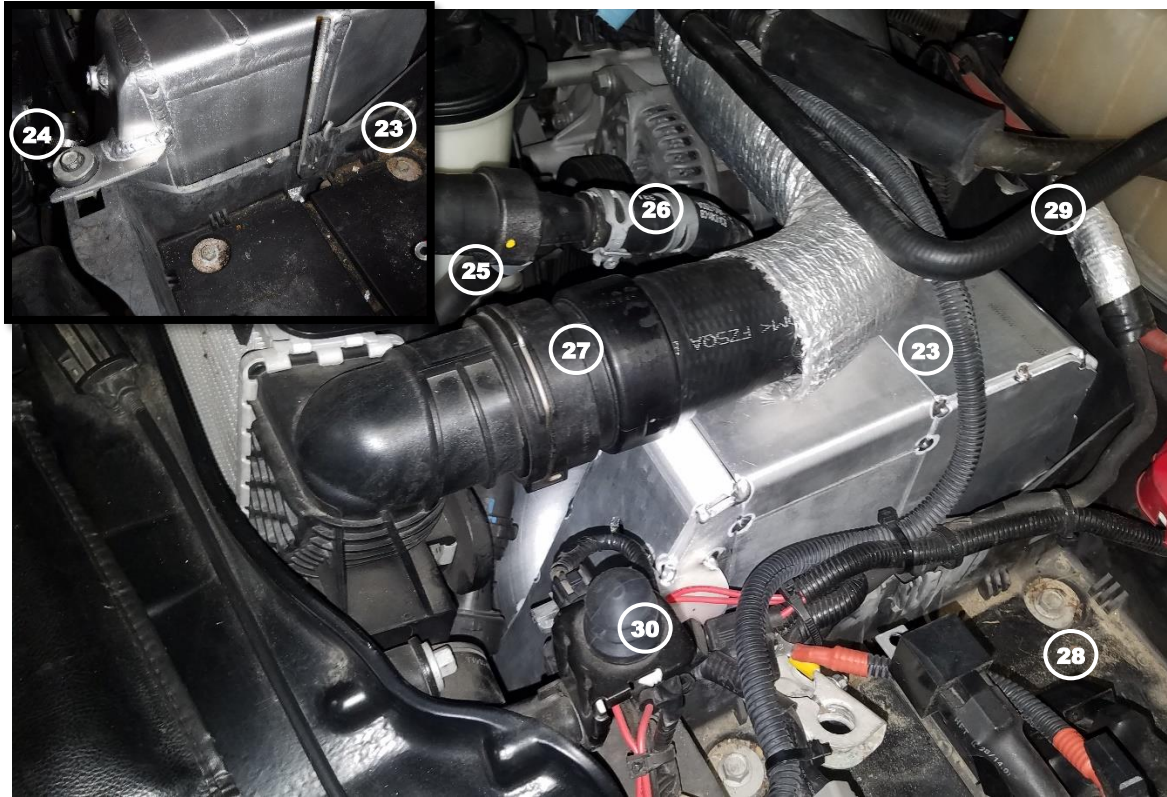
23. Remove the two (2) screws securing the intercooler to the vehicle (18) and set aside for reuse with the aFe intercooler.

24. Remove the intercooler from the vehicle.



Note: Be sure to use thread sealant on the plugs or sensors to prevent any leaking

25. If you are not using any aftermarket sensors, install two (2) supplied 1/8" NPT plugs into the fittings on the sides of the supplied aFe intercooler (19) then tighten.
26. Transfer the two (2) rubber grommets from the factory intercooler (20) to the aFe intercooler.
27. Install the supplied M8x1.25 clip nut onto the aFe intercooler (21)
28. Transfer the plastic coolant hose retainer clip from the factory intercooler (22) to the aFe intercooler.



29. Install the aFe intercooler into the vehicle (23)
30. Secure the aFe intercooler (24) to the vehicle using the factory mounting screws from Step 23.
31. Connect quick connect coolant hose (25) to the intercooler fitting from Step 28
32. Install the supplied aFe coolant hose into the vehicle, along with the supplied No. 012 clamps on each end of the hose (26) and tighten the clamps.
33. Reconnect the upper radiator hose and secure it with the factory retaining clip (27)
34. Reinstall the driver side battery and connect the positive battery cable (28)
35. Reconnect the overflow hose to the coolant tank (29)
36. Reinstall the hood switch and reconnect the connector (30)



37. Reinstall the hot side intercooler tube with coupling onto the turbo outlet, (31) be sure the clip goes into the groove on the turbo outlet all the way around.
38. Once connected, give it a little pull to be sure it is connected all the way.
39. Connect the coupling on the end of the tube onto the intercooler inlet (32)
40. Ensure the tube is not touching anything then tighten the clamps.



41. Reinstall the factory retaining clip into the adaptor.
42. Install the cold side intercooler tube with the engine inlet adaptor into the vehicle, by first connecting the intercooler tube to the aFe intercooler (33) and then to the engine inlet (34)
43. Reconnect the connector to the temperature sensor (35) in the cold side intercooler tube.
44. Ensure the tube is not touching anything then tighten the clamps.



45. Reconnect the negative battery cables (36)

46. Use the proper coolant refill procedure to be sure that all of the air gets out of the system when refilling both cooling systems.

47. Install the radiator caps (37)

48. Test drive vehicle.

49. Let vehicle cool down then check coolant levels, top off if needed.

Install is now complete!

Note: Be sure to check all connection after 50-100 miles

This Page Intentionally Left Blank

This Page Intentionally Left Blank

Warranty

General Terms:

- aFe warrants their products to be free from manufacturer's defects due to workmanship and material.
- This warranty applies only to the original purchaser of the product and is nontransferable.
- Proof of purchase of the aFe product is required for all warranty claims.
- Warranty is valid provided aFe instructions for installation and/or cleaning were properly followed.
- Proper maintenance with regular inspections of product is required to insure warranty coverage.
- Damage due to improper installation, abuse, unauthorized repair or alteration is not warranted.
- Incidental or consequential damages or cost, including installation and removal of part, incurred due to failure of aFe product is not covered under this warranty.
- All warranty is limited to the repair and/or replacement of the aFe part. To request Return Goods Authorization ("RGA"), email RGA@afepower.com or call (951)493-7100. Upon receipt of the RGA, you must return the product to the address provided in the RGA, freight prepaid and accompanied with a dated proof of purchase and the RGA. Upon receipt of the defective product and upon verification of proof of purchase, aFe will either repair or replace the defective product within a reasonable time, not to exceed thirty days.

Product Category	P/N Prefix	Warranty duration
Direct OE Replacement Filters	10, 11, 30, 31, 71, 73	Life of the vehicle
Racing Filters	18	1 year
Universal	21, 24, 72	2 years
Air Intake Systems	50, 51, 54, 55, 75	2 years
Exhaust Systems	49	2 years
Intercoolers & Intercooler Tubes	46-2	2 years
Intake Manifolds	46-1	2 years
Differential Cover	46-7	Life of the vehicle
Exhaust Manifolds	46	2 years
Throttle Body Spacers	46-3	2 years
Fluid Filters	44	90 days
Pre-Filters	28	2 years
Heavy Duty OE Replacement	70	2 years
PowerSports OE Replacement	81, 87	2 years
PowerSports Intake Systems	85	2 years

No other warranty expressed or implied applies nor is any person or advanced FLOW engineering authorized to assume any other warranty. Some States do not allow the exclusion or limitation of incidental or consequential damages or do not allow limitations on how long an implied warranty lasts, so the above limitations or exclusions may not apply to you. This warranty gives you specific legal rights, and you may also have other rights which vary from State to State.



advanced FLOW engineering, inc.

252 Granite Street Corona, CA 92879

TEL: 951.493.7100 • TECH: 951.493.7100 x23

E-Mail: Tech@aFepower.com