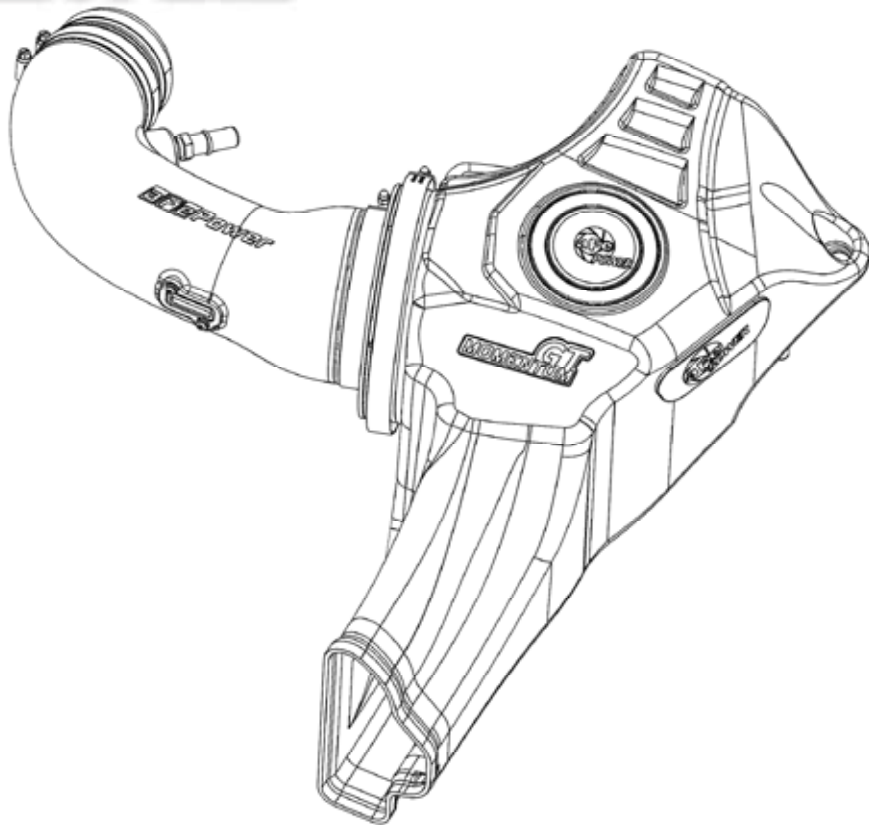


GT
MOMENTUM™



advanced FLOW engineering

Cold Air Intake System

Instruction Manual P/N: 50-70033D / 50-70033R

Make: **Ford**

Model: **Mustang GT**

Year: **2018-2023** Engine: **V8-5.0L**



- Please read the entire instruction manual before proceeding.
- Ensure all components listed are present.
- If you are missing any of the components, call customer support at 951-493-7185 .
- Ensure you have all necessary tools before proceeding.
- Do not attempt to work on your vehicle when the engine is hot.



Retain factory parts for future use.

Label	Qty.	Description	Part Number
A1	1	Air Filter (Pro 5R)	24-91062
A2	1	Air Filter (Pro DRY S)	21-91062
B	1	Tube	05-5070033B1
C	1	Housing	05-5070033B2
D	1	Plug, Air Box	05-00937
E	1	Coupling, Silicone Reducer	05-01358
F	1	Clamp, #056	03-50009
G	1	Clamp, T-bolt (7.31" - 7.62")	03-50352
H	1	Fitting, Vent (Small)	05-01338
I	1	Fitting, Vent (Large)	05-01339
J	1	Cap, Vinyl	03-50623
K	2	Screw, Torx: M4	03-50490
L	1	Clamp, #060	03-50002

Installation will require the following tools:

8mm/7mm nut driver, 10mm/11MM deep socket & driver, pliers, T20 Torx bit, panel removal tool, flathead screw driver and adjustable wrench.

Warranty Information available at: <https://afepower.com/contact#warranty>

Emissions Disclaimer:

This product is not currently CARB exempt and is not available for purchase in California or for use on any vehicle registered with the California Department of Motor Vehicles.

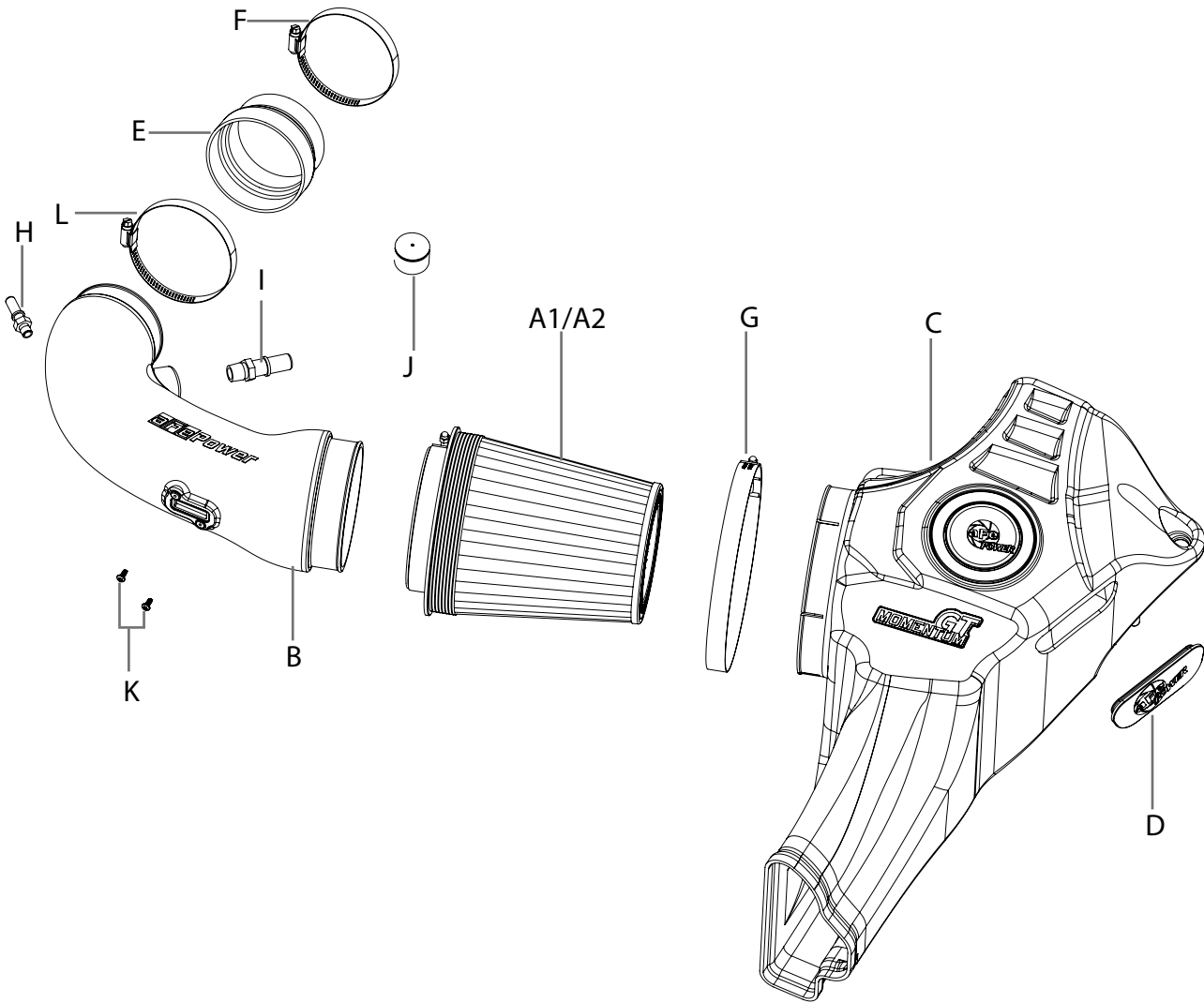




Figure A

Refer to Figure A for Steps 1-4

Step 1: Remove the engine cover by removing the bolt covers (1) and removing the 10mm nuts.

Step 2: Loosen the two (2) clamps (7mm nut driver) on the intake tube. (2)

Step 3: Disconnect the two (2) fittings on the intake tube. (3)

Step 4: Slide the spring clamp (4) (pliers) up and disconnect the 1" rubber hose from the intake tube.

Note: Performance package models will require removal upper strut tower bar in order to remove engine cover.



Figure B

Refer to Figure B for Steps 5-8

Step 5: Remove the bolt (10mm socket) that is securing the housing to the fender. ⑤

Step 6: Disconnect the Mass Air Flow (MAF) sensor ⑥ and unclip the rest of the wire harness from the side of the factory air box.

Step 7: Remove the sound chamber ⑦ from the air box by removing the metal clip ⑧ with a small flat head screwdriver. Then pull up on the small box.

Step 8: Slip the intake tube out off the throttle body and pull up on the back of the air box to remove the factory intake system.



Figure C

Refer to Figure C for Steps 9-10

Step 9: Relocate the terminal connector, located on the fender well, to the hole nearest the front of the vehicle as shown. (9)

Step 10: Disconnect the push clips located further down on the wire harness. This will allow slack to reconnect the MAF sensor later. (10)



Figure D

Refer to Figure D for Steps 11-13

Step 11: Pull out the metal sleeve and rubber grommet (11) from the factory air box.

Step 12: Remove the rubber guide bushing (12) from the factory air box.

Step 13: Transfer the grommet, sleeve, and guide bushing to the new aFe POWER housing.



INSTALL

Figure E

Refer to Figure E for Steps 14-15

Step 14: Remove the MAF sensor (13) from the factory air box using a T20 torx bit.

Step 15: Install the MAF sensor into the new aFe POWER intake tube using the new M4x10mm torx screws (14).



Figure F

Refer to Figure F for Step 16

Step 16: Pre-install the two aluminum fittings (15) with an adjustable wrench into their respective locations on the intake tube.

NOTE: The supplied two (2) aluminum fittings are NPT threads and will not bottom out in the tube. DO NOT OVER TIGHTEN!

**Figure G****Refer to Figure G for Steps 17-19**

Step 17: Install the aFe POWER housing (16) into the vehicle. Install the T-bolt clamp (17) along with the air filter (18). Do not tighten clamps at this time.

Step 18: Install the reducer coupler (19) and the smaller worm-gear clamp (20) onto the throttle body and tighten clamp.

Step 19: Use the factory bolt (10mm socket) to secure the new aFe POWER housing in place.

NOTE: Make sure the MAF sensor harness is pulled back out of the way before installing the housing.



Figure H

Refer to Figure H for Steps 20-22

Step 20: Place the large worm-gear clamp (21) on the other end of the silicone coupler, but do not tighten.

Step 21: Install the aFe POWER intake tube (22) into the vehicle by slipping into the air filter then by rotating it into the coupler.

Step 22: Re-connect the harness to the MAF sensor (23) and tighten all clamps.



Refer to Figure I for Steps 23-25

Step 23: Connect all the fittings (24) back to the respective locations.

Step 24: Re-install the engine cover (25) with the two (x2) 10mm nuts removed from Step 1. Then snap covers into place.

Step 25: Block off the sound port (26) with the supplied cap.



Figure J

Refer to Figure J for Steps 26-27

Step 26: Ensure all clamps are tightened and fully secured.

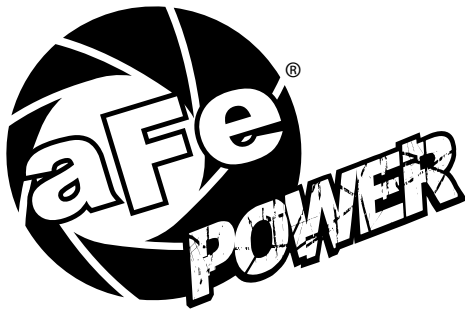
Step 27: Your installation is now complete. Thank you for choosing aFe POWER!

NOTE: Check all bolts, clamps, and connectors after 100-200 miles.



Page left blank intentionally

Page left blank intentionally



advanced FLOW engineering, inc.

Corona, CA 92879

<https://afepower.com/contact>