

Description: PFADT Series Rear Trailing Arms; Chevrolet Camaro 10-15
Part Number: 460-402002-A

What's in the box:

- (2) –Trailing Arms
- (1) – Package of 8 polyurethane bushings and 2 grease packets
- (1) – Package of 4 anodized aluminum sleeves

Difficulty of Installation: Beginner |-----x-----| **Advanced**

Reason: This product is a very easy install.

Expected Installation Time: 1 Hour and 45 Minutes

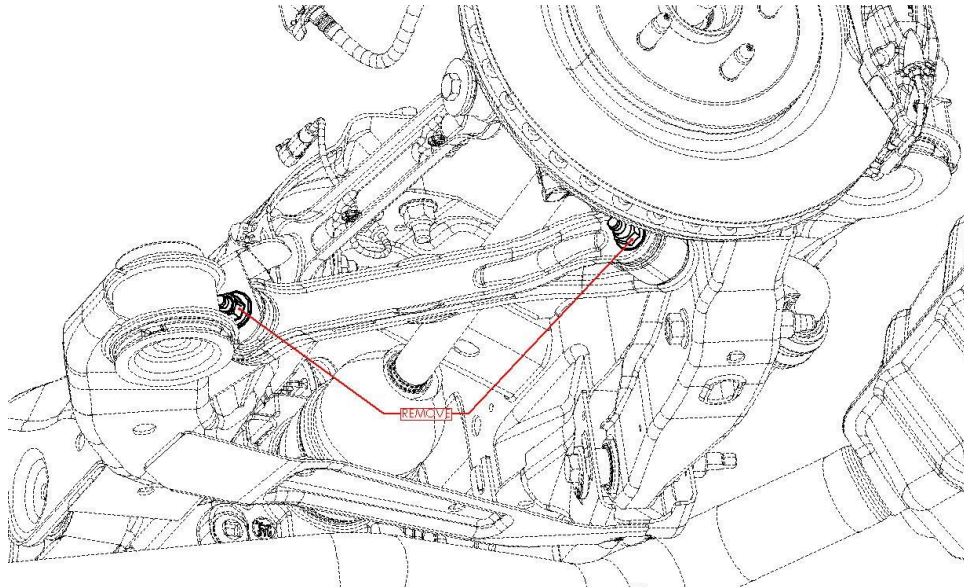
Recommended Tools:

- 18mm Socket and Ratchet
- 18mm Box End Wrench
- Torque Wrench
- Press

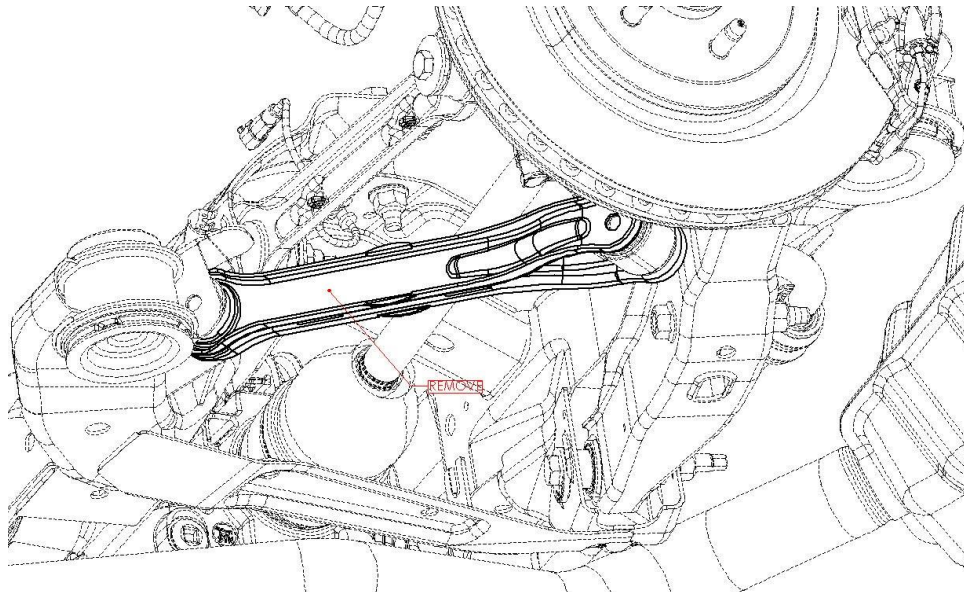
Installation Procedure

OEM Part Removal

Safely lift and support the rear of the car and remove rear wheels.

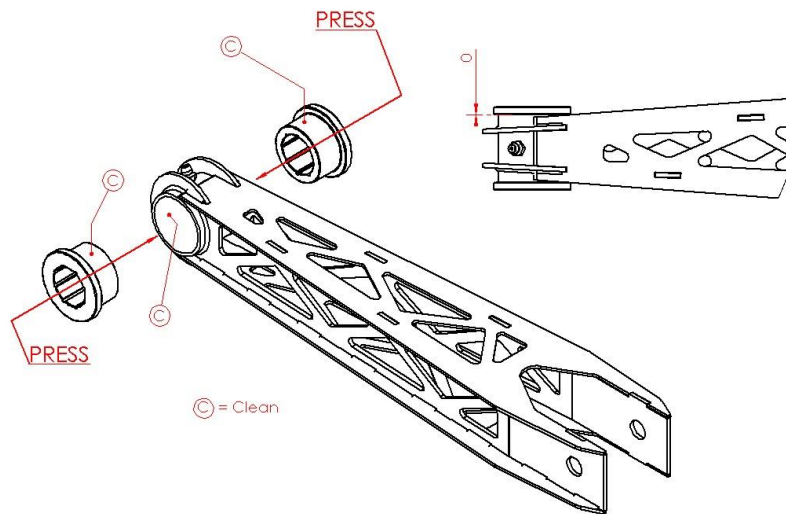


Using the 18mm socket and 18mm box end wrench remove the two bolts and nuts holding each trailing arm in the car.

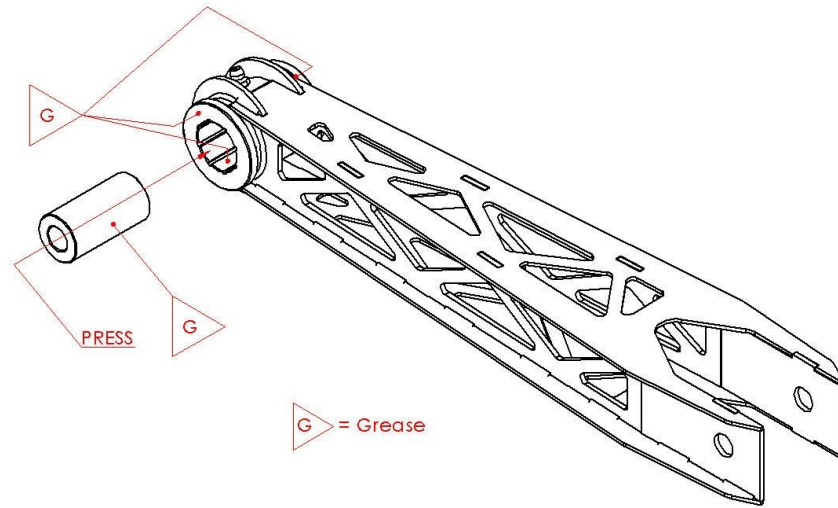


Remove the trailing arm and press bushing from upright.

Part Installation

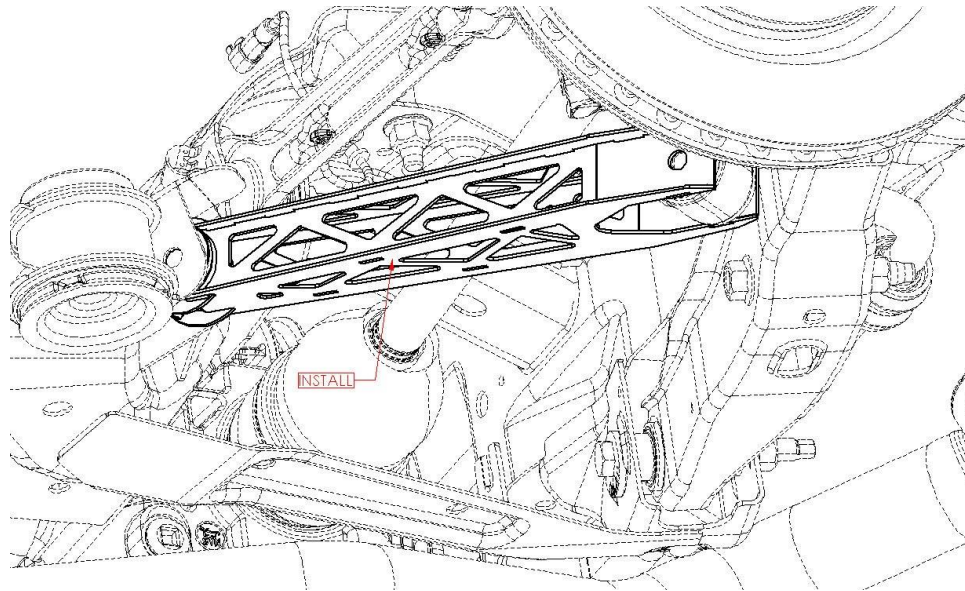


Clean the surfaces of the trailing arm and bushing as shown. Press the polyurethane bushings into the trailing arm. The flange faces should be touching the sides of the trailing arm.

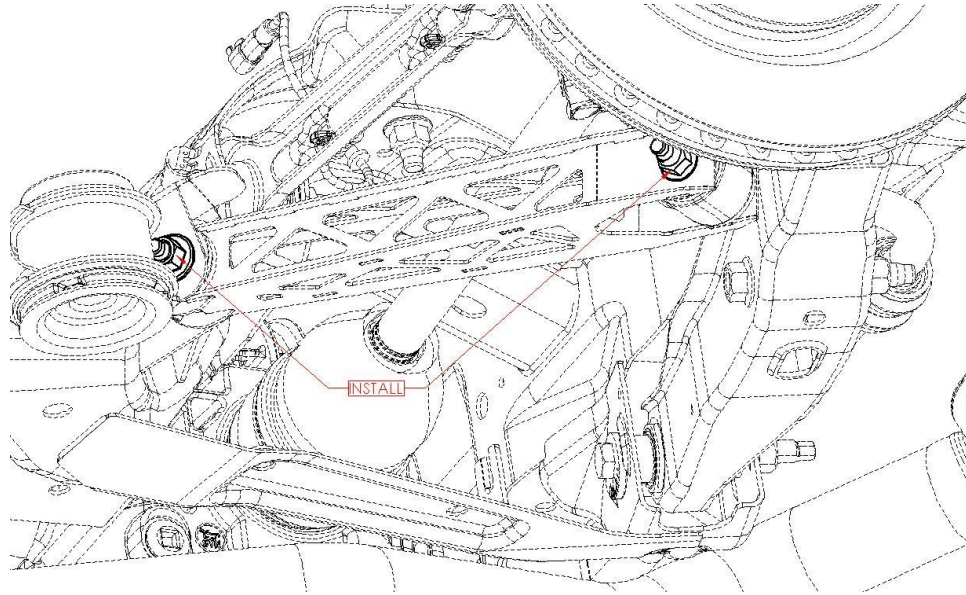


Coat the outside of the aluminum sleeve. Coat the flange and inside of each bushing, filling the grooves, with the provided grease.

Repeat this bushing installation procedure for the upright bushings.



Install new trailing arm.



Using the 18mm socket and 18mm box end wrench reinstall the two bolts and nuts attaching the trailing arm to the chassis and torque.

At this point take a moment to check each bolt that was removed has been tightened.

Reinstall the wheels and safely lower car. Torque lug nuts.

Test drive and Enjoy!

Fastener Torque

Trailing Arm Bolts, M12

71 N-m (52 ft-lbs)

Please contact aFe Control Support with any questions!



191 Granite Street Ste C
Corona, CA 92879
951-493-7128
www.aFecontrol.com