



INSTALLATION MANUAL
MATRIX FRONT BUMPER
PRODUCT NUMBER: X415X
APPLICATION: 2017+ FORD SUPER DUTY



IMPORTANT SAFETY GUIDE | Your safety and the safety of others is very important.

In order to help you make informed decisions about safety, we have provided the following warnings, safety precautions, installation instructions, and other important information to alert you to potential hazards that could hurt you or others.

Please do a job safety analysis before each task to identify potential hazards for your situation and remove/protect against them. Use own good judgment and take your time.

Check packaged materials immediately upon arrival to ensure that all listed parts are included and undamaged.

Read and understand all warnings, safety precautions, and instructions before installing this product.

SENSORS FIELD OF VIEW WILL BE ALTERED WITH USE OF THE REPLACEMENT BUMPER.

WARNINGS

- Failure to observe the following warnings and instructions provided in this manual could lead to severe injury and/or death.
- For professional installation only. Careless installation and/or operation can result in serious injury, death, and/or equipment damage. All liability for installation and use rests with the user or consumer.
- Fab Fours, Inc. only approves installing this product according to these written instructions with the hardware provided. Failure to install according to these instructions will invalidate the warranty. This includes, but is not limited to, using alternative installation methods, hardware, or materials.
- This product is for off road use only.

SAFETY PRECAUTIONS

- Always remove jewelry and wear eye protection.
- Always use extreme caution when jacking up a vehicle for work. Set emergency brake and use tire blocks. Locate and use the vehicle manufacturers designated lifting points. Use jack stands.
- Always use appropriate and adequate care in lifting components into place.
- Always ensure components will remain secure during installation and operation.
- Always wear safety glasses when installing this kit. A drilling operation will cause flying metal chips. Flying chips can cause serious eye injury.
- Always use extreme caution when drilling a vehicle. Always disconnect power before welding. Thoroughly inspect the area to be drilled (on both sides of material when possible) prior to drilling, and relocate any objects that may be damaged.
- Always use extreme caution when welding a vehicle. Thoroughly inspect the area to be welded (on both sides of material when possible) prior to welding, and relocate any objects that may be a fire hazard. When welding in a cab, make sure the interior surfaces are covered (e.g., welding blanket) and a fire extinguisher is at hand.
- Always use extreme caution when cutting and trimming during fitting.
- Always tighten all nuts and bolts securely per installation instructions.
- Always route electrical cables carefully. Avoid moving parts, components that become hot, and rough or sharp edges.
- Always insulate and protect all exposed wiring and electrical terminals.
- Perform regular inspections and maintenance on mounts and hardware.

TABLE OF CONTENTS

2	SAFETY / DISCLAIMER
3	TABLE OF CONTENTS
4	A MESSAGE FROM THE OWNER
5	GETTING STARTED
6	PROVIDED MATERIAL
8	DISASSEMBLY
9	INSTALLATION
11	CONTACT

A MESSAGE FROM THE OWNER



Fab Fours' was born out of a passion for customizing vehicles and a love for the outdoors. Our engineering team uses the latest 3D design software to turn new product ideas into reality. In our factory, designs come to life with the combination of cutting edge technology for metal cutting and forming and an American workforce that puts its' heart and pride into every product.

From design and manufacturing, to quality and delivery, Fab Fours' mission is to be the market leader for steel truck and jeep accessories. We make sure a quality product is delivered on time, more than expected, better than expected to our customers.

Enjoy your new Fab Fours product. Welcome to the family!

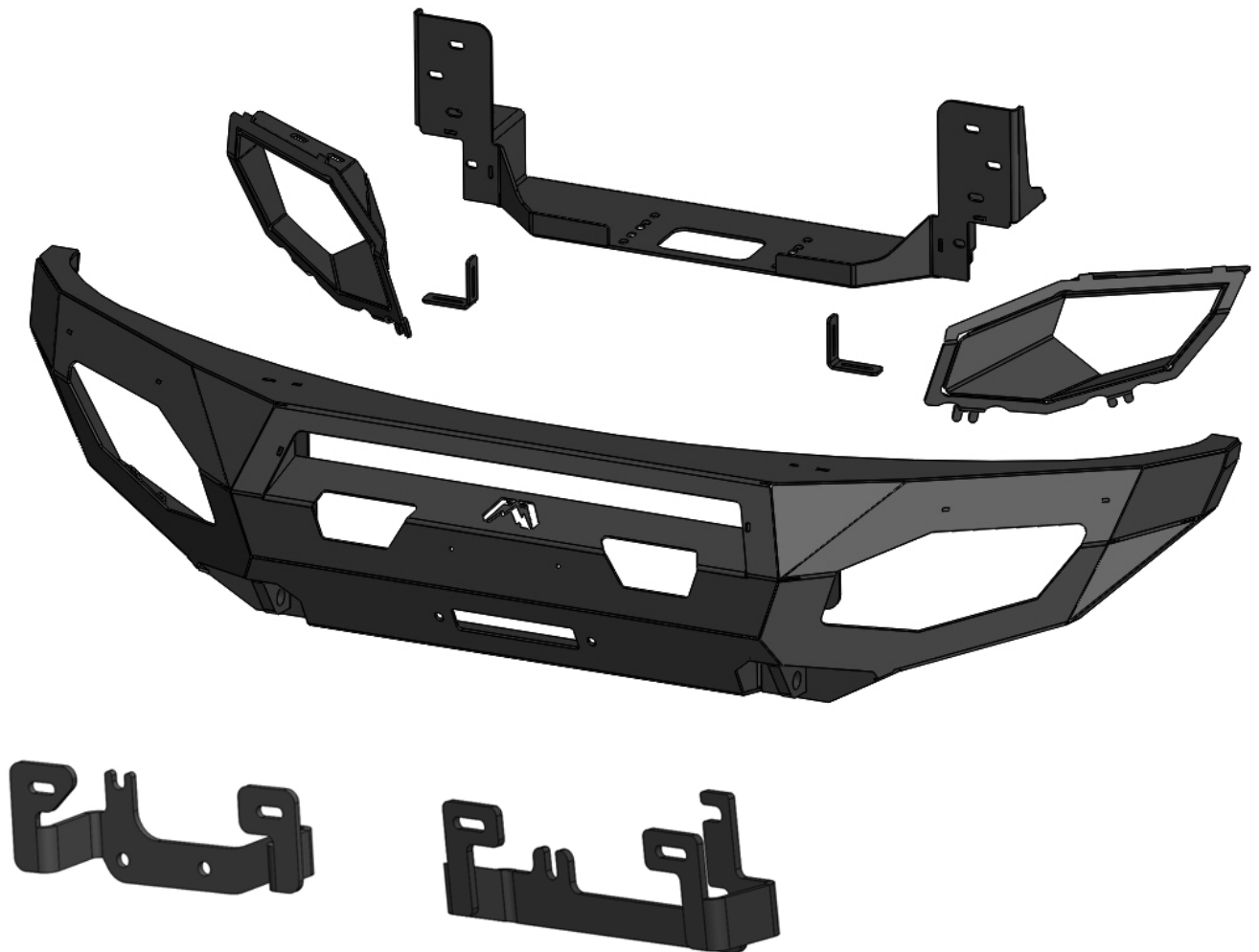
Greg Higgs

FOUNDER, FAB FOURS

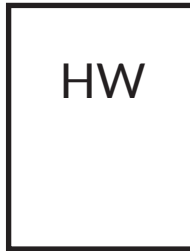
GETTING STARTED

Before you begin the installation process of your new Fab Fours product, we suggest laying out all materials and parts on a pad or protective surface.

Failure to fully account for all components before beginning installation may leave vehicle immobile until part is acquired. Refer to the next pages as an inventory check.



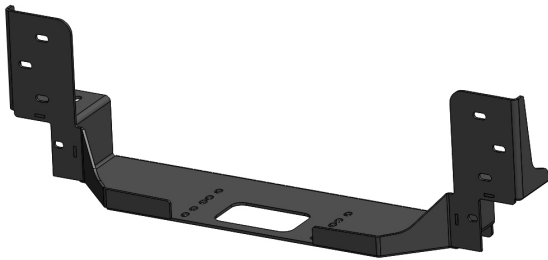
PROVIDED MATERIALS



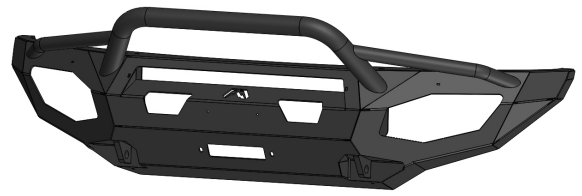
50177-HW
50244-HW



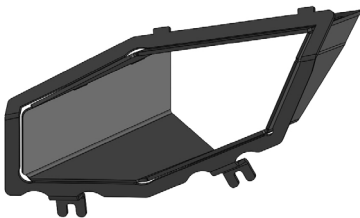
X415X-IM



21859



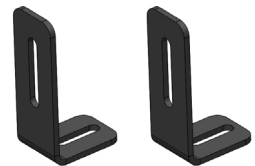
21856



21857



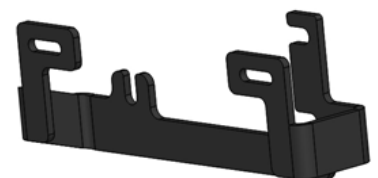
21858



21871
QTY: 2



22135



22322

HARDWARE KIT | 50177/50244

FAB FOURS IDENTIFICATION	COMPONENT DESCRIPTION	QTY
50177-HW	1/4"-20, Yellow Zinc Hex Cap Bolt, Grade 8	2
50177-HW	1/4"-20, Yellow Zinc Hex Nut, Grade 8	2
50177-HW	1/4", Yellow Zinc Flat Washer, Grade 8	4
50177-HW	1/4", Yellow Zinc Lock Washer, Grade 8	2
50177-HW	5/16"-18, Yellow Zinc Hex Cap Bolt, Grade 8	4
50177-HW	5/16", Stainless Steel Flat Washer	4
50177-HW	5/16", Yellow Zinc Lock Washer, Grade 8	4
50177-HW	7/16"-14, Yellow Zinc Hex Cap Bolt, Grade 8	8
50177-HW	7/16"-14, Yellow Zinc Hex Nut, Grade 8	8
50177-HW	7/16", Yellow Zinc Lock Washer, Grade 8	8
50177-HW	7/16", Yellow Zinc Flat Washer, Grade 8	16
50177-HW	1/2"-13, Yellow Zinc Hex Cap Bolt, Grade 8	8
50177-HW	1/2"-13, Yellow Zinc Hex Nut, Grade 8	8
50177-HW	1/2", Yellow Zinc Lock Washer, Grade 8	8
50177-HW	1/2", Yellow Zinc Flat Washer, Grade 8	16

FAB FOURS IDENTIFICATION	COMPONENT DESCRIPTION	QTY
50244-HW	1/4"-20 X 1.25" BUTTON HEAD CAP SCREW, STAINLESS STEEL	2
50244-HW	1/4"-20 NYLOCK HEX NUT, STAINLESS STEEL	2
50244-HW	1/4" FLAT WASHER, STAINLESS STEEL	4
50244-HW	M6 NYLOCK HEX NUT, STAINLESS STEEL	1
50244-HW	M6 FLAT WASHER, STAINLESS STEEL	1
50244-HW	M8 NYLOCK HEX NUT, STAINLESS STEEL	2
50244-HW	M8 FLAT WASHER, STAINLESS STEEL	2

TOOLS REQUIRED

- Plastic panel pry tool
- 15mm socket wrench
- 18mm socket wrench
- 1/2" socket wrench
- 3/4" socket wrench
- 5/8" socket wrench
- 11/16" socket wrench
- 5/8" Socket wrench
- 11/16" Socket wrench

ASSISTANCE

We recommend two people perform the installation as items are heavy and may need to be held in place while installing.

ORGANIZATION

Disassemble the vehicle where you can catalog and store everything. We suggest labeling and bagging all the OEM bolts when removing from the vehicle. Failure to keep track of parts could lead to an inability to properly reinstall components.

DISASSEMBLY

Note: Save all OEM parts until installation is complete!

1. Using a 15mm socket wrench, remove the four (4) bolts from the bumper supports on both side of the vehicle located by the wheel well. (Figure 1)

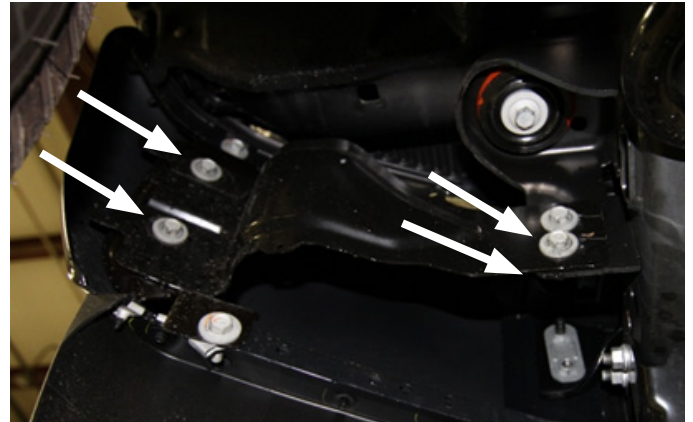


Figure 1

2. With assistance, hold the bumper in place. Using an 18mm socket wrench, remove the four (4) bolts that surround the tow hooks located on both sides on the front of the bumper. Remove the bumper from the truck. (Figure 2)



Figure 2

3. Using an 18mm socket wrench, remove the four (4) bolts from the tow hooks on both sides. (Figure 3)

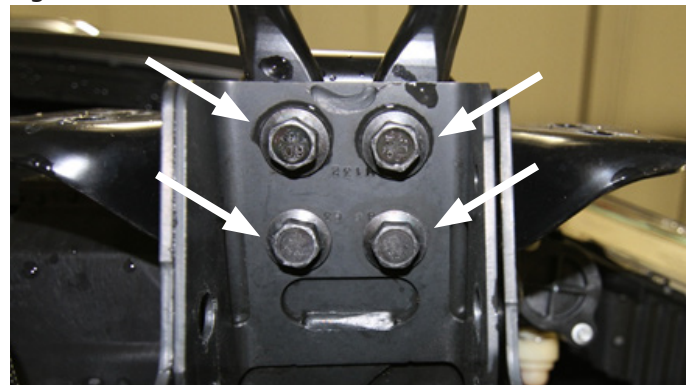


Figure 3

4. Using an 18mm socket wrench, remove the four (4) nuts and bolt plates from the frame horn brackets. (Figure 4)

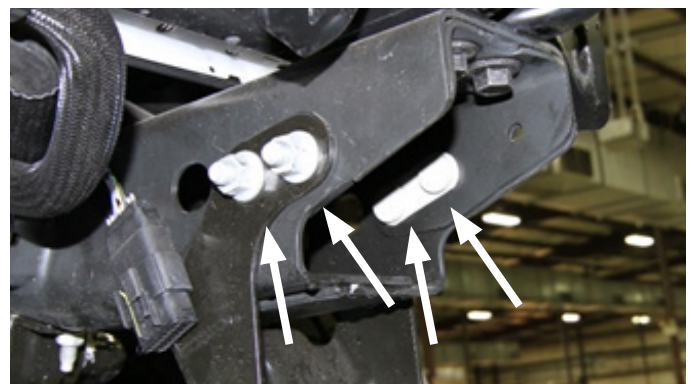


Figure 4

INSTALLATION

5. Using a 1/2" socket wrench, install the light boxes (21857 and 21858) onto the bumper by inserting the tabs into the slots and bolting it down with the provided 5/16"-18 bolts, 5/16" lock washers and 5/16" flat washers on both sides of the vehicle (50177-HW). (Figure 5)

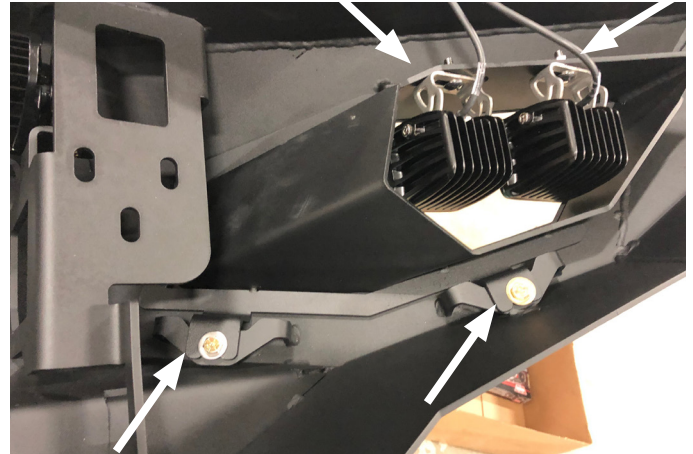


Figure 5

6. If truck is equipped with Adaptive Cruise Control Sensor: Install now using one of the provided brackets (22315 or 22322). Use the M6 and M8 nuts and washers to attach the sensor to the bracket. (Figure 6)



Figure 6

7. Take the OEM plastic sensor/tow hook cover and cut out the upper portion shown below. This will be used to cover the sensor in your new bumper. (Figure 7)

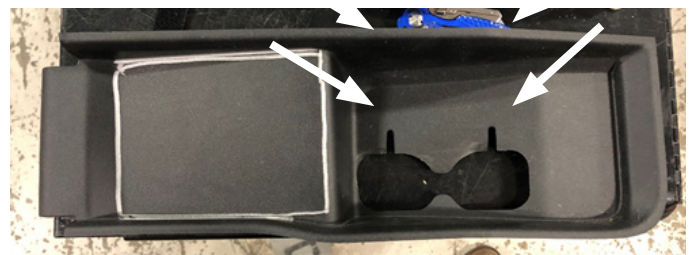


Figure 7

INSTALLATION

8. Sandwich the plastic cutout between the bracket and the bumper to cover the sensor before installing. With a $7/16''$ socket wrench and $5/32''$ allen wrench to attach the bracket to the bumper with the $1/4''$ bolts, washers and nuts. ****NOTE: After bumper is installed stalled make sure the sensor is perpendicular to the ground.**** (Figure 8)



Figure 8

9. If applicable: Install your 30" light bar at this time using the provided two (2) L-brackets (21871) with the $1/4''$ bolts, nuts, flat and lock washers (50177-HW). (Figure 9)



Figure 9

INSTALLATION

10. Using 3/4" Socket wrenches, install the winch plate (21859) with the provided 1/2"-13 bolts, flat washers, lock washers, and 1/2"-13 nuts on both sides of the vehicle. (50177-HW) (Figure10)

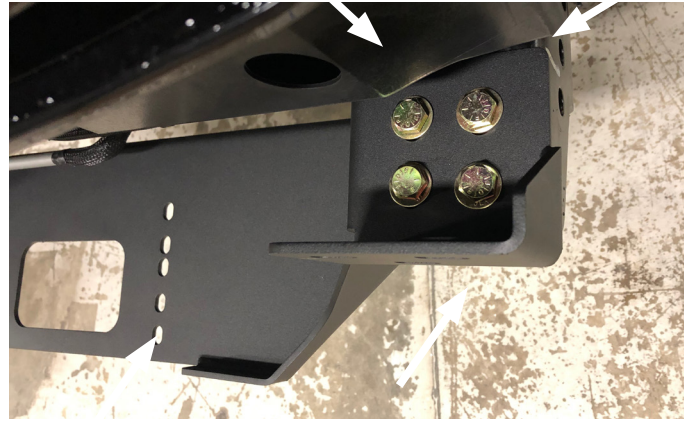


Figure 10

NOTE: If installing winch, do so at this time. If you plan to have a winch and a 30" lightbar, the winch control box will need to be relocated in order to fit. We advise relocating behind the grille.

11. With assistance, hold the bumper up to the winch plate. Using 5/8" and 11/16" socket wrenches, install the bumper to the winch plate with the provided 7/16" bolts, flat washers, lock washers, and 7/16" nuts on both sides of the vehicle (50177-HW). When you have the bumper in the desired position tighten all mounting bolts. (Figure 11)

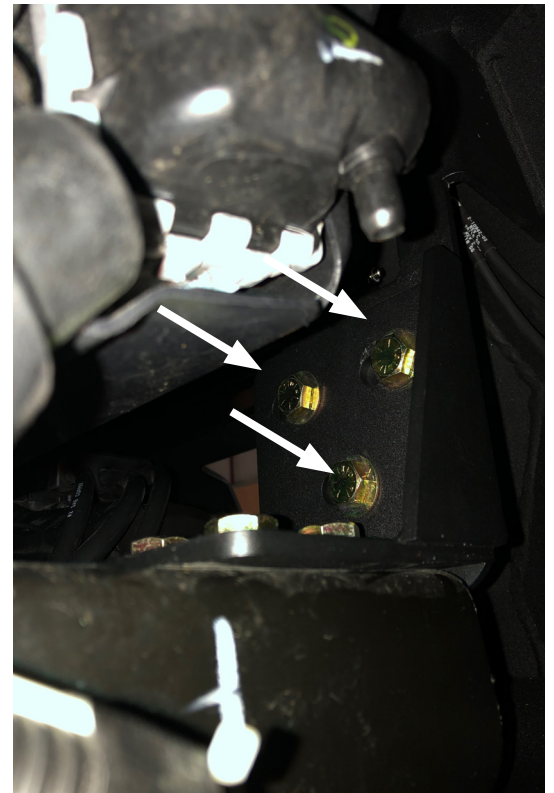


Figure 11

CONTACT INFORMATION

**FAB FOURS INC.
2213 INDUSTRIAL PARK ROAD
LANCASTER, SC 29720**

**PHONE: (866) 385-1905
FAX: 866-574-1423
EMAIL: SUPPORT@FABFOURS.COM
WWW.FABFOURS.COM**



**“IF YOU’RE LOOKING FOR MORE OF THE SAME,
THEN YOU’VE COME TO THE WRONG PLACE.”**

- GREG HIGGS

