



INSTALLATION MANUAL
RED STEEL REAR BUMPER
PRODUCT NUMBER: CS07-RT1850
APPLICATION: 2007-13 CHEVROLET 1500



IMPORTANT SAFETY GUIDE | Your safety and the safety of others is very important.

In order to help you make informed decisions about safety, we have provided the following warnings, safety precautions, installation instructions, and other important information to alert you to potential hazards that could hurt you or others.

Please do a job safety analysis before each task to identify potential hazards for your situation and remove/protect against them. Use own good judgment and take your time.

Check packaged materials immediately upon arrival to ensure that all listed parts are included and undamaged.

Read and understand all warnings, safety precautions, and instructions before installing this product.

SENSORS FIELD OF VIEW MAY BE ALTERED WITH USE OF THE REPLACEMENT BUMPER.

WARNINGS

- Failure to observe the following warnings and instructions provided in this manual could lead to severe injury and/or death.
- For professional installation only. Careless installation and/or operation can result in serious injury, death, and/or equipment damage. All liability for installation and use rests with the user or consumer.
- Fab Fours, Inc. only approves installing this product according to these written instructions with the hardware provided. Failure to install according to these instructions will invalidate the warranty. This includes, but is not limited to, using alternative installation methods, hardware, or materials.
- This product is for off road use only.

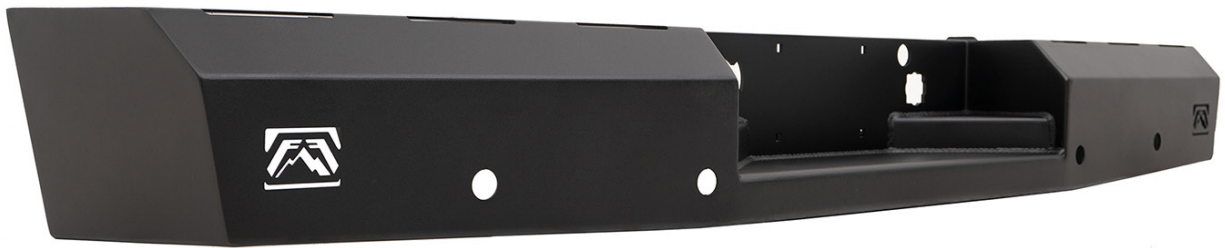
SAFETY PRECAUTIONS

- Always remove jewelry and wear eye protection.
- Always use extreme caution when jacking up a vehicle for work. Set emergency brake and use tire blocks. Locate and use the vehicle manufacturers designated lifting points. Use jack stands.
- Always use appropriate and adequate care in lifting components into place.
- Always ensure components will remain secure during installation and operation.
- Always wear safety glasses when installing this kit. A drilling operation will cause flying metal chips. Flying chips can cause serious eye injury.
- Always use extreme caution when drilling a vehicle. Always disconnect power before welding. Thoroughly inspect the area to be drilled (on both sides of material when possible) prior to drilling, and relocate any objects that may be damaged.
- Always use extreme caution when welding a vehicle. Thoroughly inspect the area to be welded (on both sides of material when possible) prior to welding, and relocate any objects that may be a fire hazard. When welding in a cab, make sure the interior surfaces are covered (e.g., welding blanket) and a fire extinguisher is at hand.
- Always use extreme caution when cutting and trimming during fitting.
- Always tighten all nuts and bolts securely per installation instructions.
- Always route electrical cables carefully. Avoid moving parts, components that become hot, and rough or sharp edges.
- Always insulate and protect all exposed wiring and electrical terminals.
- Perform regular inspections and maintenance on mounts and hardware.

TABLE OF CONTENTS

- 2 SAFETY / DISCLAIMER
- 3 TABLE OF CONTENTS
- 4 A MESSAGE FROM THE OWNER
- 5 GETTING STARTED
- 6 PROVIDED MATERIAL
- 7 DISASSEMBLY
- 8 INSTALLATION
- 10 CONTACT

A MESSAGE FROM THE OWNER



Fab Fours' was born out of a passion for customizing vehicles and a love of the outdoors. Our engineering team uses the latest 3D design software to turn new product ideas into reality. In our factory, designs come to life with the combination of cutting edge technology for metal cutting and forming and an American workforce that puts its' heart and pride into every product.

From design and manufacturing, to quality and delivery, Fab Fours' mission is to be the market leader for steel truck and jeep accessories. We make sure a quality product is delivered on time, more than expected, better than expected to our customers.

Enjoy your new Fab Fours product. Welcome to the family!

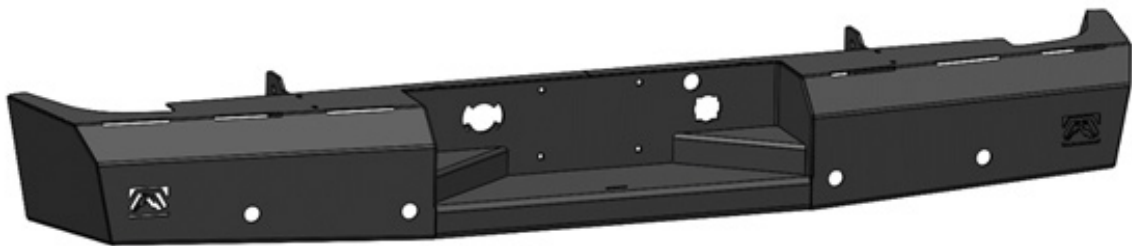
Ereg Higgs

FOUNDER, FAB FOURS

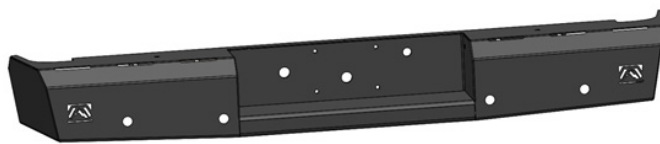
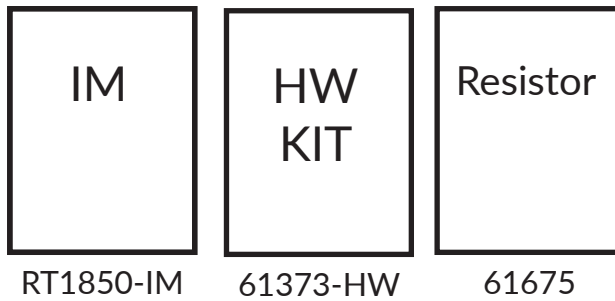
GETTING STARTED

Before you begin the installation process of your new Fab Fours product, we suggest laying out all materials and parts on a pad or protective surface.

Failure to fully account for all components before beginning installation may leave vehicle immobile until part is acquired. Refer to the next pages as an inventory check.



PROVIDED MATERIALS



22150



61672

HARDWARE KIT | 61373

| FAB FOURS IDENTIFICATION | COMPONENT DESCRIPTION | QTY |
|--------------------------|--|-----|
| 61373-HW | ½" License Plate Nut, Plastic | 4 |
| 61373-HW | M14x2 Hex Nut, Zinc | 2 |
| 61373-HW | M14 Lock Washer, Zinc | 2 |
| 61373-HW | M14 Flat Washer, Zinc | 2 |
| 61373-HW | #10-32 x 1" Button Head Bolt, Zinc | 2 |
| 61373-HW | #10-32 Nylock Nut, Zinc | 2 |
| 61373-HW | #10 Flat Washer, Zinc | 4 |
| 61373-HW | ½"-13 x 1.25" Hex Bolt, Yellow Zinc, Grade 8 | 2 |
| 61373-HW | ½"-13 x 1.5" Hex Bolt, Yellow Zinc, Grade 8 | 4 |
| 61373-HW | ½"-13 Hex Nut, Yellow Zinc, Grade 8 | 6 |
| 61373-HW | ½" Lock Washer, Yellow Zinc, Grade 8 | 6 |
| 61373-HW | ½" Flat Washer, Yellow Zinc, Grade 8 | 12 |
| 61373-HW | 1-⅜" Rubber Grommet | 4 |
| 61373-HW | Plastic Plug | 4 |

TOOLS REQUIRED

- 3/8" Socket wrench
- 3/4" Socket wrench
- 15mm Socket wrench
- 18mm Socket wrench
- 22mm Socket wrench
- 3/4" Box end wrench
- 15mm Box end wrench
- 18mm Box end wrench
- 22mm Box end wrench
- Flat head screwdriver
- 5/32" Allen wrench
- Drill
- 1/4" Drill bit
- Phillips head screwdriver

ASSISTANCE

We recommend two people perform the installation as items are heavy and may need to be held in place while installing.

ORGANIZATION

Disassemble the vehicle where you can catalog and store everything. We suggest labeling and bagging all the OEM bolts when removing from the vehicle. Failure to keep track of parts could lead to an inability to properly reinstall components.

DISASSEMBLY

NOTE: Save all OEM parts until installation is complete!

1. Remove license plate and OEM license plate lights. Disconnect trailer receptacle. If equipped unplug back-up sensor harness.
2. Using an 18mm socket wrench, remove the two (2) fasteners connecting the hitch to the stock bumper located on either side of the receiver.
3. Remove the fasteners connecting the bumper mounts to the frame.
4. Using a 22mm socket wrench, remove one (1) bolt from the bottom of the frame.
5. Using both an 15mm and 18mm socket wrench, remove the three (3) bolts from the side of the frame (18mm and 15mm). Save hardware for reuse.
6. Remove OEM bumper by pulling it rearward away from the truck.
7. Remove OEM spare tire access cover and trailer plug from the OEM bumper. Set aside for reinstallation.



Figure 1

INSTALLATION

8. Replace OEM bumper with your new Fab Fours bumper assembly.

9. Use the provided $\frac{1}{2}$ "-13x 1.5" yellow zinc hex bolt, yellow zinc lock and flat washers, yellow zinc hex nut and fasten the bumper (22150) to the frame rail in the OEM mounting locations. Do not fully tighten, hand snug up only. (Figure 1) (61376-HW)

10. Use the provided $\frac{1}{2}$ "-13x 1.25" yellow zinc hex bolt, yellow zinc lock and flat washers, yellow zinc hex nut and fasten the bumper (22150) to the hitch. Do not fully tighten, hand snug up only. (61373-HW)

11. Level and align the bumper in relation to the truck bed. Fully tighten all fasteners.

12. Secure the two (2) factory M14 bolts to the bottom of each frame rail using the two (2) supplied M14 yellow zinc lock and flat washer, yellow zinc hex nut. (Figure 2) (61373-HW)

13. Slowly lower the tailgate to ensure there will be no interference. If required, loosen the frame bolts / hitch bolts and adjust alignment of the bumper.

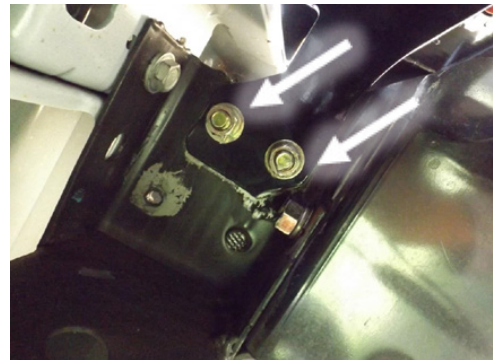


Figure 1



Figure 2

14. Install tag light (61363) into the 1 ¼" hole provided in the center section. The powder coating may need to be removed from the hole for proper grounding. Connect wire into the hot wire of OEM tag light circuit. Verify operation. (Figure 3)



Figure 3

15. To reinstall the trailer plug receptacle, two mounting holes need to be drilled into the mounting flange. Use the cut-out in the bumper to mark and drill the required ½" holes. Use the two (2) supplied #10-32 x 1" socket head screws, flat washers, and Nylock nuts to secure the receptacle in the bumper. (Figure 4) (61373-HW)

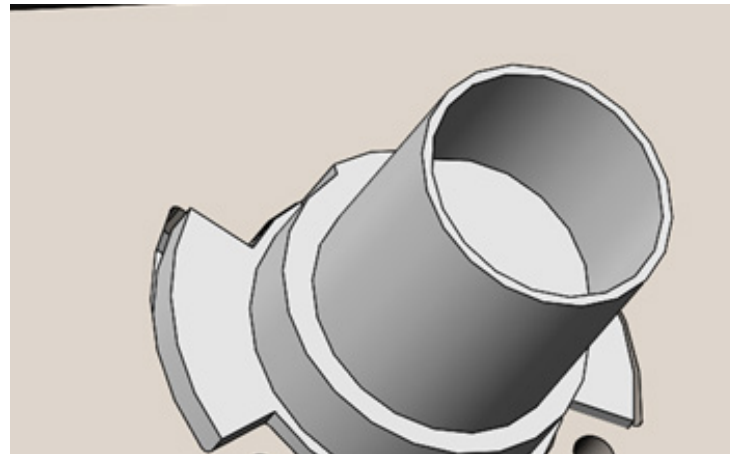


Figure 4

16. Reinstall license plate with provided plastic inserts. (Figure 5)

17. Install grommets into sensor holes. If equipped, insert sensors from the back side. If not equipped, install provided plugs into the grommets. (61373-HW)

18. Reconnect the bumper wiring harness to the vehicle harness connector.

19. Secure all loose wiring and harnesses to the frame or bumper with zip ties.

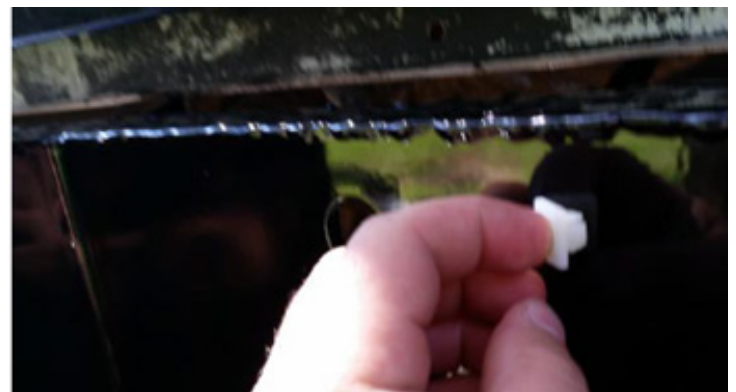


Figure 5

CONTACT INFORMATION

**FAB FOURS INC.
2213 INDUSTRIAL PARK ROAD
LANCASTER, SC 29720**

PHONE: (866) 385-1905

FAX: 866-574-1423

EMAIL: SUPPORT@FABFOURS.COM

WWW.FABFOURS.COM



**“IF YOU’RE LOOKING FOR MORE OF THE SAME,
THEN YOU’VE COME TO THE WRONG PLACE.”**

- GREG HIGGS

